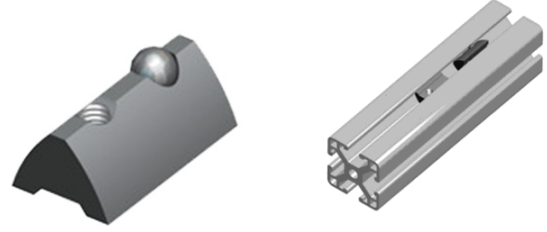
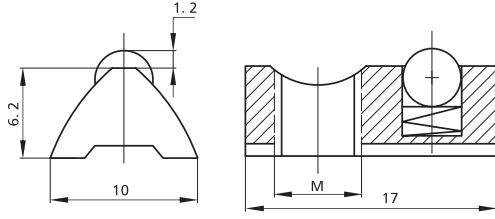


Nut/T Slot Nut/Slot 6



Slot	Item No.	Spec.	Material	Finish	PCS/CTN	KGS/CTN	CTN SIZE (mm)
6	2024-0	M3	Steel	Zinc Blue	4,000	18.50	225*170*180
6	2024-1	M4	Steel	Zinc Blue	4,000	17.45	225*170*180
6	2024-2	M5	Steel	Zinc Blue	4,000	16.25	225*170*180
6	2024-3	M6	Steel	Zinc Blue	4,000	15.25	225*170*180

