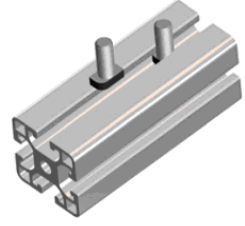
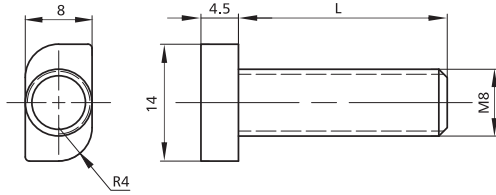





Bolts & Screws/T Slot Bolt



Slot	Item No.	M	L	Material	Finish	PCS/CTN	KGS/CTN	CTN SIZE (mm)
	1004-1	M8	20	Steel/class 8.8	Zinc Blue	2000	18.25	225*170*180
	1004-2	M8	25	Steel/class 8.8	Zinc Blue	1500	16.50	225*170*180
	1004-3	M8	30	Steel/class 8.8	Zinc Blue	1200	15.20	225*170*180

