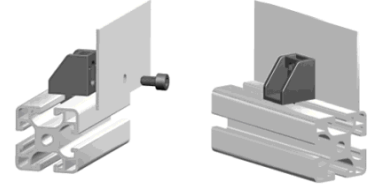
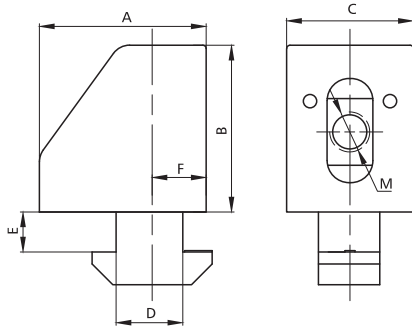









## Alu Profile Accessories/Uniblocks



| Slot  | Item No. | A    | B    | C    | D  | E   | F    | M  | Material | Finish | PCS/CTN | KGS/CTN | CTN SIZE (mm) |
|---|----------|------|------|------|----|-----|------|----|----------|--------|---------|---------|---------------|
|  10  | 3026-B   | 25   | 25   | 19   | 10 | 6   | 8    | M6 | Nylon    | Black  | 250     | 2.9     | 225*170*180   |
|  8   | 3026-A   | 25   | 25   | 19   | 8  | 4.6 | 12.5 | M6 | Nylon    | Black  | 250     | 2.7     | 225*170*180   |
|  8   | 3026-C   | 25   | 25   | 19   | 8  | 3   | 12.5 | M6 | Nylon    | Black  | 250     | 2.7     | 225*170*180   |
|  5   | 3026-D   | 14.2 | 15.8 | 12.7 | 5  | 1.8 | 4.5  | M4 | Nylon    | Black  | 1000    | 3       | 225*170*180   |
|  6   | 3026-E   | 14.2 | 15.8 | 12.7 | 6  | 1.5 | 4.5  | M4 | Nylon    | Black  | 1000    | 2.9     | 225*170*180   |
|  8  | 3026F    | 25   | 25   | 19   | 8  | 2.3 | 12.5 | M6 | Nylon    | Black  | 250     | 2.7     | 225*170*180   |

