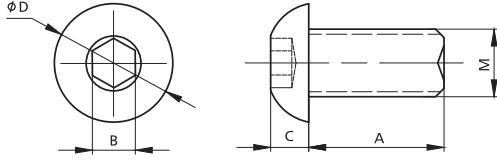


Bolts & Screws/Profile Connctor



Item No.	Material	Finish	M	A	B	C	D	PCS/CTN	KGS/CTN	CTN SIZE (mm)
1008-4-16	Steel/Class 10.9	Zinc Blue	M8	16	5.1	4.5	14	2000	16.60	225*170*180
1008-4-20	Steel/Class 10.9	Zinc Blue	M8	20	5.1	4.5	14	2000	18.30	225*170*180
1008-4-50	Steel/Class 10.9	Zinc Blue	M8	50	5.1	4.5	14	800	14.7	225*170*180
1008-4-25	Steel/Class 10.9	Zinc Blue	M8	25	5.1	4.5	13.5	1500	16.7	225*170*180
1008-4-45	Steel/Class 10.9	Zinc Blue	M8	45	5.1	4.5	14			225*170*180
1008-4-30	Steel/Class 10.9	Zinc Blue	M8	30	5.1	4.5	14			225*170*180
1008-3-10	Steel/Class 10.9	Zinc Blue	M6	10	4.1	4.0	10.2	5000	14.9	225*170*180
1008-2-10	Steel/Class 10.9	Zinc Blue	M5	10	3.05	3.0	9.2	8000	16.5	225*170*180
1008-2-12	Steel/Class 10.9	Zinc Blue	M5	12	3.05	3.0	9.2	7000	16.4	225*170*180
1008-2-16	Steel/Class 10.9	Zinc Blue	M5	16	3.05	3.0	9.2	5000	14.5	225*170*180
1008-2-20	Steel/Class 10.9	Zinc Blue	M5	20	3.05	3.0	9.2	4000	13.05	225*170*180

