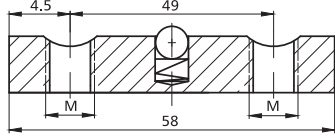
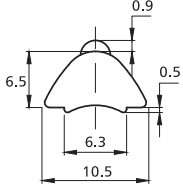


## Nut/T Slot Nut/Slot 6



Slot	Item No.	Spec.	Material	Finish	PCS/CTN	KGS/CTN	CTN SIZE(mm)
6	2025-0	M3	Steel	Zinc Blue	3,500	19.50	225*170*180
6	2025-1	M4	Steel	Zinc Blue	3,500	18.65	225*170*180
6	2025-2	M5	Steel	Zinc Blue	3,500	17.25	225*170*180
6	2025-3	M6	Steel	Zinc Blue	3,500	16.50	225*170*180
6	2025-0SS	M3	SS 304/1.4301	Polished	3,500	20.35	225*170*180
6	2025-1SS	M4	SS 304/1.4301	Polished	3,500	19.65	225*170*180
6	2025-2SS	M5	SS 304/1.4301	Polished	1,000	18.35	225*170*180
6	2025-3SS	M6	SS 304/1.4301	Polished	1,000	17.25	225*170*180

