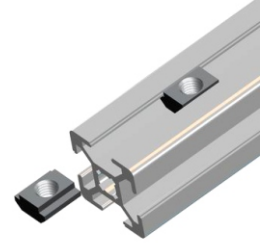
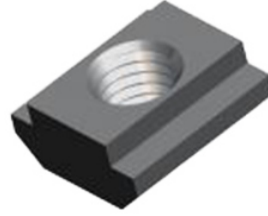
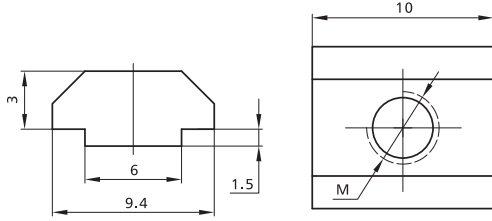






## Nut/T Slot Nut/Slot 6



Slot	Item No.	Spec.	Material	Finish	PCS/CTN	KGS/CTN	CTN SIZE (mm)
	2044-0	M3	Steel	Nickel Plated	10,000	23.50	225*170*180
	2044-1	M4	Steel	Nickel Plated	10,000	21.95	225*170*180
	2044-2	M5	Steel	Nickel Plated	10,000	19.50	225*170*180
	2044-3	M6	Steel	Nickel Plated	10,000	19	225*170*180

