

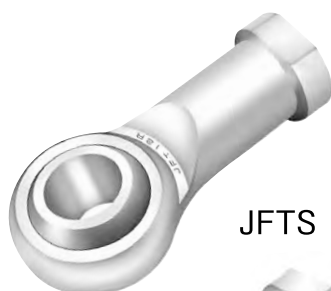
We take great pride in developing and manufacturing our bearings for ourselves.

ROD ENDS

MAINTENANCE-FREE
METRIC DIMENSION
FEMALE THREAD

STAINLESS STEEL

JFTS در حالیکه همان ابعاد JFT را دارد ولی از فولاد ضد زنگ ساخته شده و سفارشی است اگر شما هنوز به صورت منظم روغنکاری انجام می دهید، اکنون زمان استفاده از مفاصل بدون نیاز به تعمیر و نگهداری فرا رسیده است

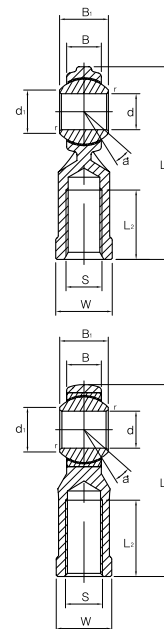
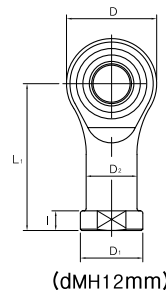
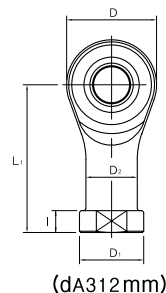


JFTS



JFTS

Heavy Load



(Bearing No.)	(Mass) gr.	(Dimensions) mm														(Tilting angle) a°	(Spherical Diameter) mm	(Basic Static Load Ratings) Co Kgf
		d	(Threads) S	D	B +0.1 -0.4	B1 +0 -0.1	d1	L (max)	I	L1 (max)	L2	W +0 -0.2	D1	D2	r			
JFTS 3	6.5	3	M 3×0.5	12	4.5	6	7.4	27	3	21	9.5	7	8	6.5	0.5	11	9.525	300
JFTS 4	10	4	M 4×0.7	14	5	7	7.5	31	4	24	12	8	9.5	8	0.5	12	10	350
JFTS 5	16.5	5	M 5×0.8	16	6	8	7.7	35	4	27	13.5	9	11	9	0.5	13	11.1	400
JFTS 6	25	6	M 6×1.0	18	6.75	9	9	39	5	30	14	11	13	10	0.5	13	12.7	510
JFTS 8	43	8	M 8×1.25	24	9	12	10.4	48	5	36	15	14	16	13	0.5	13	15.87	760
JFTS 10	72	10	M10×1.25 M10×1.5	26	10.5	14	12.9	56	7	42.5	20	17	19	15	0.5	13	20.6	960
JFTS 12	107	12	M12×1.75	31	12	16	15.8	66	7.5	50.5	23	19	22	17.5	0.5	13	22.5	1,120
JFTS 14	160	14	M14×1.5 M14×2.0	35	13.5	19	16.9	75	8.5	57.5	25	22	25	20	0.5	15	25.4	1,550
JFTS 16	210	16	M16×1.5 M16×2.0	39	15	21	19.3	83	8.5	63.5	30	24	27	22	0.5	15	28.5	2,060
JFTS 18	295	18	M18×1.5	43	16.2	23	21.7	92	10	71.5	33	27	31	25	0.5	15	31.6	2,570
JFTS 20	380	20	M20×1.5	48	18	25	23.8	101	11	78	38	30	34	27.5	0.5	15	34.5	2,840
JFTS 22	490	22	M22×1.5	54	20	28	25.8	111	12	84	43	32	37	30	0.5	15	38.1	3,400
JFTS 25	750	25	M24×2.0	64	22	31	29.8	126	12	94	49	36	42	33.5	0.5	15	43	5,980
JFTS 30	900	30	M30×2.0	73	25	37	34.8	145	16.5	108.5	50	47	49	40	0.5	15	50.8	7,600

Please denote thread dimension in order sheet when you order star marked threaded rod ends in upper table.

This model can be used without lubrication. However, if desiring to provide initial lubrication, apply oil or grease to the spherical area.

JFTS 14 and JFTS 30 are suitable for the accommodation of heavyloads because they are supplied equipped with spherical plain bearings.

