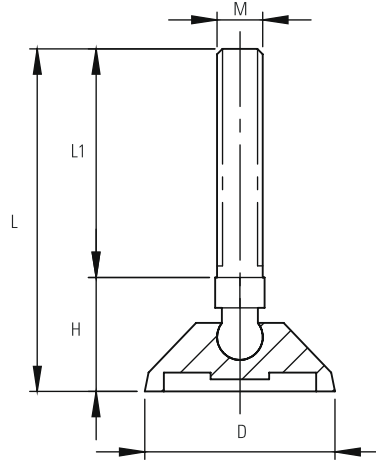


EPX SERIES Polyamide Articulated Feet with Inox Bolt (19 SW)

CODE	D (mm)	M	L (mm)	L1 (mm)	H (mm)	Load kg / pcs
EPX60 1660	60	M16x60	110	60	50	500
EPX60 1610	60	M16x100	150	100	50	500
EPX60 1615	60	M16x150	200	150	50	500
EPX60 2010	60	M20x100	150	100	50	500
EPX60 2015	60	M20x150	200	150	50	500
EPX80 1660	80	M16x60	110	60	50	600
EPX80 1610	80	M16x100	150	100	50	600
EPX80 1615	80	M16x150	200	150	50	600
EPX80 2010	80	M20x100	150	100	50	600
EPX80 2015	80	M20x150	200	150	50	600
EPX10 1660	100	M16x60	110	60	50	800
EPX10 1610	100	M16x100	150	100	50	800
EPX10 1615	100	M16x150	200	150	50	800
EPX10 2010	100	M20x100	150	100	50	800
EPX10 2015	100	M20x150	200	150	50	800
EPX11 1660	110	M16x60	110	60	50	1000
EPX11 1610	110	M16x100	150	100	50	1000
EPX11 1615	110	M16x150	200	150	50	1000
EPX11 2010	110	M20x100	150	100	50	1000
EPX11 2015	110	M20x150	200	150	50	1000



Stainless Steel Bolt Polyamide Feet

Base in black polyamide material

Articulated STAINLESS STEEL Bolts

On request antislip pad in rubber is available with (L) on standard code

On request with stainless,steel nut too

