

## Rigid coupling

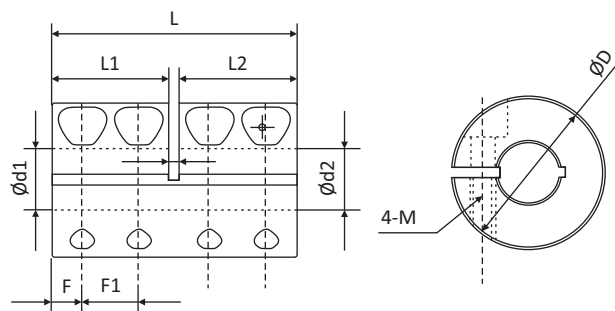


### Features :

- ◆ low inertia and excellent response
- ◆ High torque rigid
- ◆ Zero backlash
- ◆ Wear resistance to oil and chemical
- ◆ Maintenance free

High precision rigid coupling is one-piece configuration, It apply to the two shafts joint, and it could produce its excellent function no matter under what circumstances of low speed, high speed and high torque, but it also has the disadvantage of which cannot deformation (non elastic)

Rigid couplings could not allowed parallel, angular shaft misalignment, you must arrange the two axis in a straight line in order to protect the coupling and peripheral equipment



## Dimension : (mm)

model	aperture				D	L	L1/L2	E	F	F1	G	M	tightening torque (N.m)
	d1		d2										
	Min	Max	Min	Max									
JRL20C	5	8	5	8	20	30	14.4	1.2	-	-	-	M2.5	1
JRL25-36C	6	10	6	10	25	36	19.4	1.2	4	-	-	-	1
JRL25-40C	6	10	6	10	25	40	19.4	1.2	4	-	-	-	1
JRL30C	8	12	8	12	30	44	21.3	1.4	-	-	-	-	-
JRL32C	6	10	6	10	32	41	20	1	4.5	-	-	-	1.5
JRL35C	8	15	8	15	35	44	21.2	1.5	10	-	-	-	4
JRL40C	10	24	10	24	40	50	24.2	1.5	7	-	-	-	4
JRL50C	12	30	12	30	50	71	35.2	1.5	9	-	-	-	8

Example :

JRL	43	C	19	22
Model	Outside diameter	Fixed mode	Aperture	Aperture



OBC		RW	Sungil	Rotex
كود جديد	كود قديم			
<b>MPA &amp; MPA-C</b>				
MPA 26	HPS 26	-	-	-
MPA26C	HPS26C	-	-	-
MPA34C	HPS34C	-	-	-
MPA39C	HPS39C	-	-	-
MPA44C	HPS44C	-	-	-
MPA56C	HPS56C	-	-	-
MPA68C	HPS68C	-	-	-
MPA82C	HPS82C	-	-	-
MPA94C	HPS94C	-	-	-
MPA104C	HPS104C	-	-	-
<b>MPB-C &amp; MPC-C</b>				
MPB34C	-	-	-	-
MPC34C	-	-	-	-
MPB44C	-	-	-	-
MPC44C	-	-	-	-
MPB56C	-	-	-	-
MPC56C	-	-	SHDS56C	-
MPB68C	-	-	-	-
MPC68C	-	-	SHDS66C	-
MPB82C	-	-	-	-
MPC82C	-	-	SHDS88C	-
<b>DMPA-C &amp; DMPB-C</b>				
DMPA26C	HPL26C	-	-	-
DMPA34C	HPL34C	-	SDWB22C	-
DMPB34C	-	-	-	-
DMPA39C	HPL39C	-	-	-
DMPA44C	HPL44C	-	SDWB42C	-
DMPB44C	-	-	-	-
DMPA56C	HPL56C	-	SDWB54C	-
DMPB56C	-	-	-	-
DMPA68C	HPL68C	-	-	-
DMPB68C	-	-	-	-
DMPA82C	HPL82C	-	-	-
DMPB82C	-	-	-	-
DMPA94C	HPL94C	-	SDWB90C	-
DMPA104C	HPL104C	-	-	-
<b>DMPC-C &amp; DMPD-C</b>				
DMPC34C	TM4-34C	-	-	-
DMPD34C	-	-	-	-
DMPD39C	-	-	-	-
DMPC44C	TM4-44C	-	-	-
DMPD44C	-	-	-	-
DMPC56C	TM4-56C	-	SHDW-56C	-
DMPD56C	-	-	-	-
DMPC68C	TM4-68C	-	SHDW-68C	-
DMPD68C	-	-	-	-
DMPC82C	TM4-82C	-	SHDW-82C	-
DMPD82C	-	-	-	-

OBC		RW	Sungil	Rotex
كود جديد	كود قديم			
<b>JT &amp; JT-C</b>				
JT 16	PK 16	-	-	-
JT16C	PK16C	-	SBR16C	-
JT 20	PK 20	-	-	-
JT20C	PK20C	-	SBR20C	-
JT 25	PK 25	-	-	-
JT25C	PK25C	-	SBR25C	-
JT 32	PK 32	-	-	-
JT32C	PK32C	-	SBR32C	-
JT 40	PK 40	-	-	-
JT40C	PK40C	-	SBR40C	-
JT 50	PK 50	-	-	-
JT50C	PK50C	-	SBR50C	-
JT 63	PK 63	-	-	-
JT63C	PK63C	-	SBR63C	-
<b>JR-C &amp; JRL-C</b>				
JR16C	JG2-16C	-	SRG-16C	-
JR20C	JG2-20C	-	SRG-20C	-
JRL20C	-	-	SRGL-20C	-
JR25C	JG2-25C	-	SRG-25C	-
JRL25C	-	-	SRGL-25C	-
JR32C	JG2-32C	-	SRG-32C	-
JRL32C	-	-	SRGL-32C	-
JR43C	JG2-43C	-	SRG-43C	-
JRL43C	-	-	SRGL-43C	-
JR53C	JG2-53C	-	SRG-53C	-
JRL53C	-	-	SRGL-53C	-
<b>BW &amp; BW-C &amp; BW-T</b>				
BW 16	JB2-16	-	-	-
BW16C	JB2-16C	-	-	-
BW 20	JB2-20	-	-	-
BW20C	JB2-20C	-	-	-
BW 25	JB2-25	-	-	-
BW25C	JB2-25C	-	-	-
BW 32	JB2-32	-	-	-
BW32C	JB2-32C	MK2/45	-	-
BW 40	JB2-40	-	-	-
BW40C	JB2-40C	MK2/100	-	-
BW 55	JB2-55	-	-	-
BW55C	JB2-55C	BKL30	-	-
BW65C	JB2-65C	BKL60	-	-
BW82C	JB2-82C	BKL80	-	-
BW40T	JB2-40T	-	-	-
BW55T	JB2-55T	-	-	-
BW65T	JB2-65T	-	-	-
BW82T	JB2-82T	-	-	-



OBC		RW	Sungil	Rotex
کد جدید	کد قدیم			
<b>JM &amp; JM-C</b>				
JM 14	SRJ 14	-	-	-
JM14C	SRJ14C	-	SJC14C-RD	-
JM 16	SRJ 16	-	-	-
JM16C	SRJ16C	-	-	-
JM 20	JSRJ 20	-	-	-
JM20C	SRJ20C	-	SJC20C-RD	-
JM 25	SRJ 25	-	-	-
JM25C	SRJ25C	EKL5A	SJC25C-RD	GS9-12
JM 30	SRJ 30	-	-	-
JM30C	SRJ30C	EKL10A	SJCB30C-RD	GS 14
JM 40	SRJ 40	-	-	-
JM40C	SRJ40C	EK2/20	SJCB40C-RD	GS 19
JM 55	SRJ 55	-	-	-
JM55C	SRJ55C	EK2/60	SJC55C-RD	GS 24
JM 65	SRJ 65	-	-	-
JM65C	SRJ65C	EK2/150	SJC65C-RD	GS 28
JM 80	SRJ 80	-	-	-
JM80C	SRJ80C	EK2/300	SJC80C-RD	GS38-42
JM 95	SRJ 95	-	-	-
JM95C	SRJ95C	-	-	-
JM 105	SRJ 105	-	-	-
JM105C	SRJ105C	EK2/450	SJC100C-RD	-
JM 120	SRJ 120	-	-	GS48
JM120C	SRJ120C	-	-	-
JM 135	SRJ 135	-	-	-
JM 135C	SRJ 135C	-	-	-
<b>JH</b>				
JH16C	JH2-16C	-	SOH-16C	-
JH20C	JH2-20C	-	SOH-20C	-
JH25C	JH2-25C	-	SOH-25C	-
JH32C	JH2-32C	-	SOH-32C	-
JH40C	JH2-40C	-	SOH-43C	-
JH50C	JH2-50C	-	SOH-53C	-
JH63C	JH2-63C	-	SOH-70C	-
<b>NM-Coupling</b>				
50	NM-50	-	-	-
67	NM-67	-	-	-
82	NM-82	-	-	-
97	NM-97	-	-	-
112	NM-112	-	-	-
128	NM-128	-	-	-
148	NM-148	-	-	-
168	NM-168	-	-	-
194	NM-194	-	-	-
214	NM-214	-	-	-

OBC		RW	Sungil	Rotex
کد جدید	کد قدیم			
<b>L-Coupling</b>				
L035	L-SRJ035	-	-	-
L050	L-SRJ050	-	-	-
L070	L-SRJ070	-	-	-
L075	L-SRJ075	-	-	-
L090	L-SRJ090	-	-	-
L095	L-SRJ095	-	-	-
L099	L-SRJ099	-	-	-
L100	L-SRJ100	-	-	-
L110	L-SRJ110	-	-	-
L150	L-SRJ150	-	-	-
L190	L-SRJ190	-	-	-
L225	L-SRJ225	-	-	-
L276	L-SRJ276	-	-	-
<b>XL</b>				
XL-0	XL-SRJ0(30)	-	-	-
XL-1	XL-SRJ1(40)	-	-	-
XL-2	XL-SRJ2(55)	-	-	-
XL-3	XL-SRJ3(65)	-	-	-
XL-4	XL-SRJ4(80)	-	-	-
XL-5	XL-SRJ5(95)	-	-	-
XL-6	XL-SRJ6(105)	-	-	-
XL-7	XL-SRJ7	-	-	-
XL-8	XL-SRJ8	-	-	-
XL-9	XL-SRJ9	-	-	-
XL-10	XL-SRJ10	-	-	-
XL-11	XL-SRJ11	-	-	-
XL-12	XL-SRJ12	-	-	-
XL-13	XL-SRJ13	-	-	-
XL-14	XL-SRJ14	-	-	-
XL-15	XL-SRJ15	-	-	-
XL-16	XL-SRJ16	-	-	-

