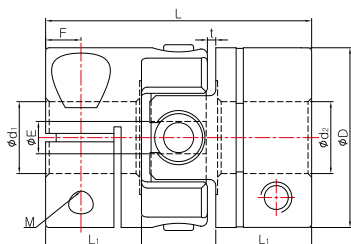


SCJ SERIES

* قطعات موجود در انبار بقیه سایز ها به زودی

Cross Joint Coupling

Side-clamp



Dimensions / Performance

Model	Size (±0.3mm)						Screw		Rated Torque (N·m)	Max. Torque (N·m)	Max. rpm (min ⁻¹)	Moment of Inertia (kg·m ²)	Static Torsional Stiffness (N·m/rad)	Mass (g)	Permissible Misalignment	
	D	L	L ₁	E	t	F	Size	Fastening Torque (N·m)							Angular (°)	Parallel (mm)
SCJA-15C	15	22.2	8	2.7	0.7	3	M2.6	1	0.25	0.5	21,000	3.3×10 ⁻⁷	220	9	1.5	0.3
SCJB-15C	15	24.2	8	2.7	1.7	3	M2.6	1	0.25	0.5	18,000	3.5×10 ⁻⁷	200	10	2	0.3
SCJA-20C	20	23.4	7.9	4.2	0.8	2.8	M2.6	1	0.5	1	16,000	1.2×10 ⁻⁶	350	19	1.5	0.5
* SCJB-20C	20	26.4	7.9	4.2	2.3	2.8	M2.6	1	0.5	1	12,000	1.3×10 ⁻⁶	300	20	2	0.5
SCJA-25C	25	30.4	10.4	5.2	1.3	3.6	M3	1.7	1	2	12,000	3.3×10 ⁻⁶	800	34	1.5	0.5
* SCJB-25C	25	33.4	10.4	5.2	2.8	3.6	M3	1.7	1	2	9,000	3.4×10 ⁻⁶	700	35	2	0.5
SCJA-32C	32	39	13.5	8.2	1.6	4.4	M4	3.5	2	4	9,000	1.1×10 ⁻⁵	1,200	72	1.5	0.5
* SCJB-32C	32	43	13.5	8.2	3.6	4.4	M4	3.5	2	4	7,000	1.2×10 ⁻⁵	1,000	75	2	0.5
SCJA-40C	40	45.6	16	10	1.8	5.9	M5	8	5	10	7,000	3.2×10 ⁻⁵	1,900	140	1.5	0.5
SCJB-40C	40	51	16	10	4.5	5.9	M5	8	5	10	5,000	3.3×10 ⁻⁵	1,800	145	2	0.5

- The Moment of Inertia and Mass values are based on products with max. Inner diameter.
- Max. torque/rated torque is the value regarding to a coupling's self-durability and is not related to slip-torque between the coupling bore and the shaft.

Standard Inner Diameter (ID)

Model	Standard Inner Diameter (d ₁ , d ₂) (mm)										
	3	4	5	6	6.35	8	10	11	12	14	15
SCJ□-15C	●	●	●								
SCJ□-20C		●	●	●	●	●					
SCJ□-25C			●	●	●	●	●				
SCJ□-32C				●	●	●	●	●	●	●	
SCJ□-40C						●	●	●	●	●	●

- The recommended shaft tolerance is h7.
- Custom process (e.g. non-standard Inner diameter, special tolerance etc.) is also available upon a special request in prior to order placement.
- Keyway is available. (Optional)

