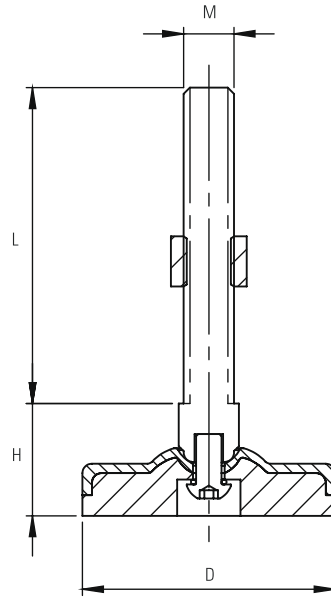


EX SERIES Stainless Steel Leveling Feet

CODE	D (mm)	M	L (mm)	H (mm)	Load kg / pcs
EX 60 1070	60	M10x70	70	30	300
EX 60 1270	60	M12x70	70	30	400
EX 60 1610	60	M16x100	100	32	500
EX 80 1270	80	M12x70	70	40	500
EX 80 1610	80	M16x100	100	42	600
EX 80 1615	80	M16x150	150	42	600
EX 80 1620	80	M16x200	200	42	600
EX 80 2010	80	M20x100	100	45	800
EX 80 2015	80	M20x150	150	45	800
EX 80 2020	80	M20x200	200	45	800
EX 10 1290	100	M12x90	90	42	350
EX 10 1610	100	M16x100	100	45	450
EX 10 1615	100	M16x150	150	45	450
EX 10 2010	100	M20x100	100	45	550
EX 10 2015	100	M20x150	150	45	550
EX 12 1290	120	M12x90	90	42	600
EX 12 1610	120	M16x100	100	45	800
EX 12 1615	120	M16x150	150	45	800
EX 12 1620	120	M16x200	200	45	800
EX 12 2010	120	M20x100	100	47	1200
EX 12 2015	120	M20x150	150	47	1200
EX 12 2020	120	M20x200	200	47	1200
EX 16 1610	160	M16x100	100	47	1500
EX 16 2015	160	M20x150	150	50	2000
EX 16 2415	160	M24x150	150	50	2000



Stainless Steel Levelling Feet

Pressed base in polished STAINLESS STEEL

Anti-slip rubber, black NBR70 Shore.

