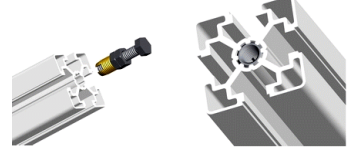
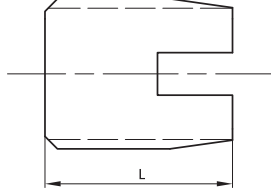
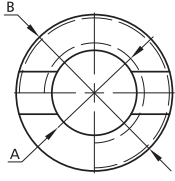


Bolts & Screws/Self Tapping Screw



Item No.	A	B	L	Material	Finish	PCS/CTN	KGS/CTN	CTN SIZE (mm)
1036-4-6	M4*0.7	M6.5*0.75	8	Alloy Steel/Class 10.9	Zinc Yellow	10000	9.45	225*170*180
1036-5-8	M5*0.8	M8*1.0	10	Alloy Steel/Class 10.9	Zinc Yellow	6000	10	225*170*180
1036-6-10	M6*1.0	M10*1.5	14	Alloy Steel/Class 10.9	Zinc Yellow	3000	11.2	225*170*180
1036-8-12	M8*1.25	M12*1.5	15	Alloy Steel/Class 10.9	Zinc Yellow	2000	10.3	225*170*180
1036-10-14	M10*1.5	M14*1.5	18	Alloy Steel/Class 10.9	Zinc Yellow	1200	9.1	225*170*180
1036-12-16	M12*1.75	M16*1.5	22	Alloy Steel/Class 10.9	Zinc Yellow	800	9.1	225*170*180

