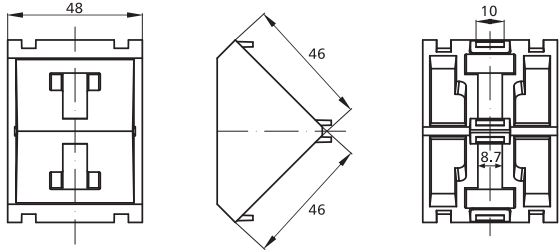
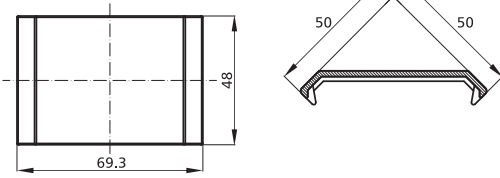


Alu Profile Accessories/Connectors/Angle Connectors & Caps

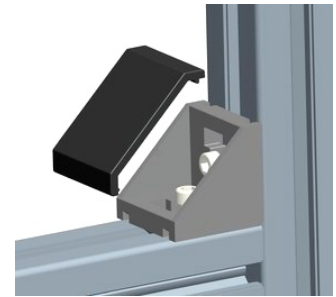
NEW



4846



4846C



| Slot | Item No. | Material | Finish | PCS/CTN | KGS/CTN | CTN SIZE (mm) |
|------|----------|--------------|---------------|---------|---------|---------------|
| 8+10 | 4846 | Die-cast Alu | Dull Polished | | | 350*225*180 |
| | 4846C | Nylon | Black | | | 350*225*180 |

