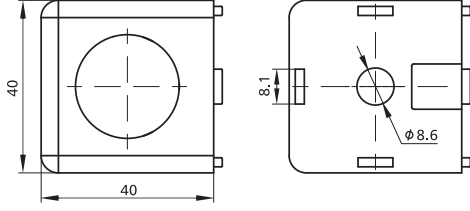
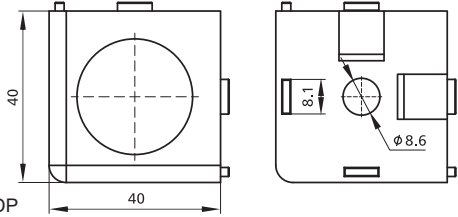


## Alu Profile Accessories/Connectors/2D-3D Connectors



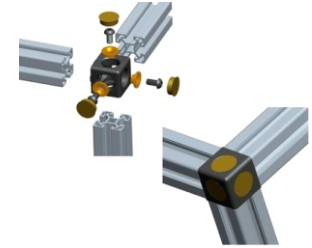
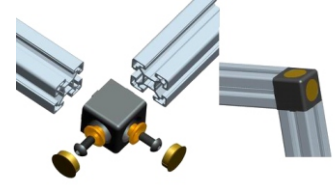
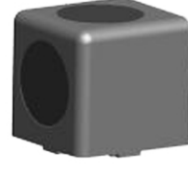
40\*40(2D)-DP

40\*40(2D)-AC



40\*40(3D)-DP

40\*40(3D)-AC



| For Profile | Item No.     | Material      | Finish        | PCS/CTN | KGS/CTN | CTN SIZE (mm) |
|-------------|--------------|---------------|---------------|---------|---------|---------------|
| 40*40(2D)   | 40*40(2D)-DP | Die-cast Alu. | Dull Polished | 50      | 6.40    | 225*170*180   |
| 40*40(2D)   | 40*40(2D)-AC | Die-cast Alu. | Alu Color     | 50      | 6.40    | 225*170*18    |
| 40*40(3D)   | 40*40(3D)-DP | Die-cast Alu. | Dull Polished | 50      | 5.70    | 225*170*180   |
| 40*40(3D)   | 40*40(3D)-AC | Die-cast Alu. | Alu Color     | 50      | 5.70    | 225*170*180   |

