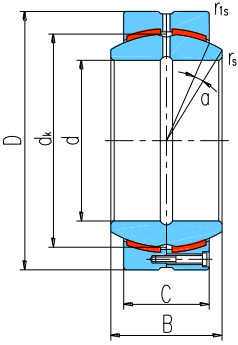


GEH...HC

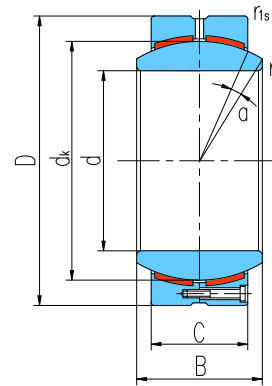
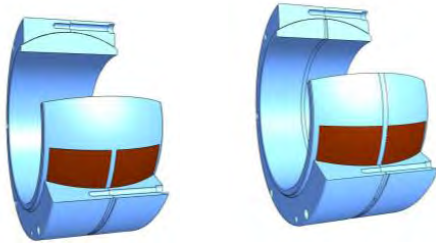


GEH...HCS

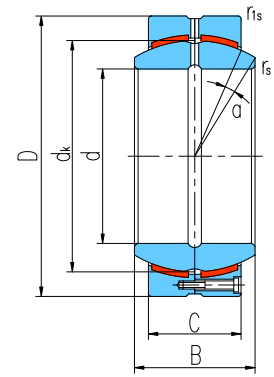
Sliding contact surfaces: Steel / PTFE composite

Bearing number		Dimensions mm								Load ratings kN		Weight ≈ kg
		d	D	B	C	dk	rs min	r1s min	α° ≈	Dynamic	Static	
GEH100HC	GEH100HCS	100	150	71	67	135	1	1	2	900	1800	5.07
GEH110HC	GEH110HCS	110	160	78	74	145	1	1	2	1070	2140	6.21
GEH120HC	GEH120HCS	120	180	85	80	160	1	1	2	1280	2560	8.87
GEH140HC	GEH140HCS	140	210	100	95	185	1	1	2	1750	3500	14.6
GEH160HC	GEH160HCS	160	230	115	109	210	1	1	2	2280	4560	18.6
GEH180HC	GEH180HCS	180	260	128	122	240	1.1	1.1	2	2920	5840	26.7
GEH200HC	GEH200HCS	200	290	140	134	260	1.1	1.1	2	3480	6960	37.1
GEH220HC	GEH220HCS	220	320	155	148	290	1.1	1.1	2	4290	8580	49.4
GEH240HC	GEH240HCS	240	340	170	162	310	1.1	1.1	2	5020	10040	57.9
GEH260HC	GEH260HCS	260	370	185	175	340	1.1	1.1	2	5950	11900	75.2
GEH280HC	GEH280HCS	280	400	200	190	370	1.1	1.1	2	7030	14060	96
GEH300HC	GEH300HCS	300	430	212	200	390	1.1	1.1	2	7800	15600	117
GEH320HC	GEH320HCS	320	460	230	218	414	1.1	3	2	9020	18040	148
GEH340HC	GEH340HCS	340	480	243	230	434	1.1	3	2	9980	19960	163
GEH360HC	GEH360HCS	360	520	258	243	474	1.1	4	2	11510	23020	213
GEH380HC	GEH380HCS	380	540	272	258	494	1.5	4	2	12740	25480	236
GEH400HC	GEH400HCS	400	580	280	265	514	1.5	4	2	13620	27240	290
GEH420HC	GEH420HCS	420	600	300	280	534	1.5	4	2	14950	29900	319
GEH440HC	GEH440HCS	440	630	315	300	574	1.5	4	2	17220	34440	379
GEH460HC	GEH460HCS	460	650	325	308	593	1.5	4	2	18260	36520	404
GEH480HC	GEH480HCS	480	680	340	320	623	2	5	2	19930	39860	463
GEH500HC	GEH500HCS	500	710	355	335	643	2	5	2	21540	43080	529
GEH530HC	GEH530HCS	530	750	375	355	673	2	5	2	23890	47780	620
GEH560HC	GEH560HCS	560	800	400	380	723	2	5	2	27470	54940	770
GEH600HC	GEH600HCS	600	850	425	400	773	2	6	2	30920	61840	903
GEH630HC	GEH630HCS	630	900	450	425	813	3	6	2	34550	69100	1092
GEH670HC	GEH670HCS	670	950	475	450	862	3	6	2	38790	77580	1270
GEH710HC	GEH710HCS	710	1000	500	475	912	3	6	2	43320	86640	1465
GEH750HC	GEH750HCS	750	1060	530	500	972	3	6	2	48600	97200	1750
GEH800HC	GEH800HCS	800	1120	565	530	1022	3	6	2	54160	108320	2029
GEH850HC	GEH850HCS	850	1220	600	565	1112	3	7.5	2	62820	125640	2704





GEH...HC



GEH...HCS

Sliding contact surfaces: Steel / PTFE composite

Bearing number		Dimensions								Load ratings		Weight ≈ kg
		mm								kN		
d	D	B	C	dk	r_s min	r_{1s} min	α° ≈	Dynamic	Static			
GEH900HC	GEH900HCS	900	1250	635	600	1142	3	7.5	2	68520	137040	2806
GEH950HC	GEH950HCS	950	1360	670	635	1242	4	7.5	2	78860	157720	3752
GEH1000HC	GEH1000HCS	1000	1450	710	670	1312	4	7.5	2	87900	175800	4612

Can supply other spherical bearings with Sliding contact surfaces Steel / Double metal or Steel / Polyformaldehyde.

