

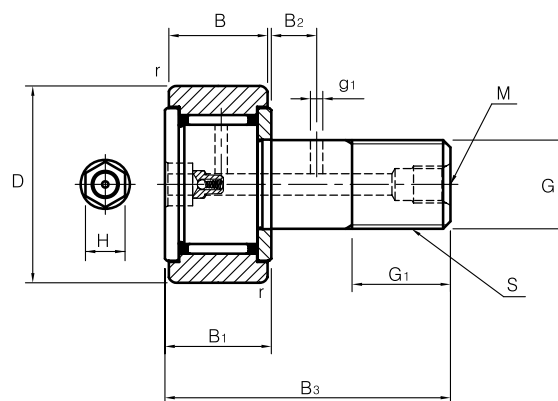
We take great pride in developing and manufacturing our bearings for ourselves.

## STUD TYPE TRACK ROLLERS

CAGE TYPE  
METRIC DIMENSION



CF



CF..

نوع CF نوع استاندارد اصلی غلتک های شیار نوع میخی تولید شده توسط JMC بر اساس ابعاد میلی متری  
CF است و نوع CR بر اساس ابعاد اینچی است . عمدتا از این دو نوع استفاده می گردد.

(Stud diameter) G mm	(Bearing No.)				(Mass) gr.	(Dimensions) mm		
	(Unsealed)		(Sealed)			H	D	(Thread sizes) S
	(Cylindrical outer ring)	(Crowned outer ring)	(Cylindrical outer ring)	(Crowned outer ring)				
CF..	CF..R	CF..UU	CF..UUR					
3	CF 3	CF 3R	CF 3UU	CF 3UUR	4.2	2	10	M 3×0.5
4	CF 4	CF 4R	CF 4UU	CF 4UUR	7.2	2.5	12	M 4×0.7
5	CF 5	CF 5R	CF 5UU	CF 5UUR	10.5	3	13	M 5×0.8
6	CF 6	CF 6R	CF 6UU	CF 6UUR	18.5	3	16	M 6×1.0
8	CF 8	CF 8R	CF 8UU	CF 8UUR	28.5	4	19	M 8×1.25
10	CFA 10	CFA 10R	CFA 10UU	CFA 10UUR	45	4	22	M10×1.0
	CFA 10-1	CFA 10-1R	CFA 10-1UU	CFA 10-1UUR	60		26	
10	CF 10	CF 10R	CF 10UU	CF 10UUR	45	4	22	M10×1.25
	CF 10-1	CF 10-1R	CF 10-1UU	CF 10-1UUR	60		26	
12	CF 12	CF 12R	CF 12UU	CF 12UUR	95	6	30	M12×1.5
	CF 12-1	CF 12-1R	CF 12-1UU	CF 12-1UUR	105		32	
16	CF 16	CF 16R	CF 16UU	CF 16UUR	170	6	35	M16×1.5
18	CF 18	CF 18R	CF 18UU	CF 18UUR	250	10	40	M18×1.5
20	CF 20	CF 20R	CF 20UU	CF 20UUR	460	10	52	M20×1.5
	CF 20-1	CF 20-1R	CF 20-1UU	CF 20-1UUR	385		47	
24	CF 24	CF 24R	CF 24UU	CF 24UUR	815	12	62	M24×1.5
	CF 24-1	CF 24-1R	CF 24-1UU	CF 24-1UUR	1,140		72	
30	CF 30	CF 30R	CF 30UU	CF 30UUR	1,870	12	80	M30×1.5
	CF 30-1	CF 30-1R	CF 30-1UU	CF 30-1UUR	2,030		85	
	CF 30-2	CF 30-2R	CF 30-2UU	CF 30-2UUR	2,220		90	

Basically, JMC track rollers can be lubricated through both end of the stud with a suitable grease fitting.

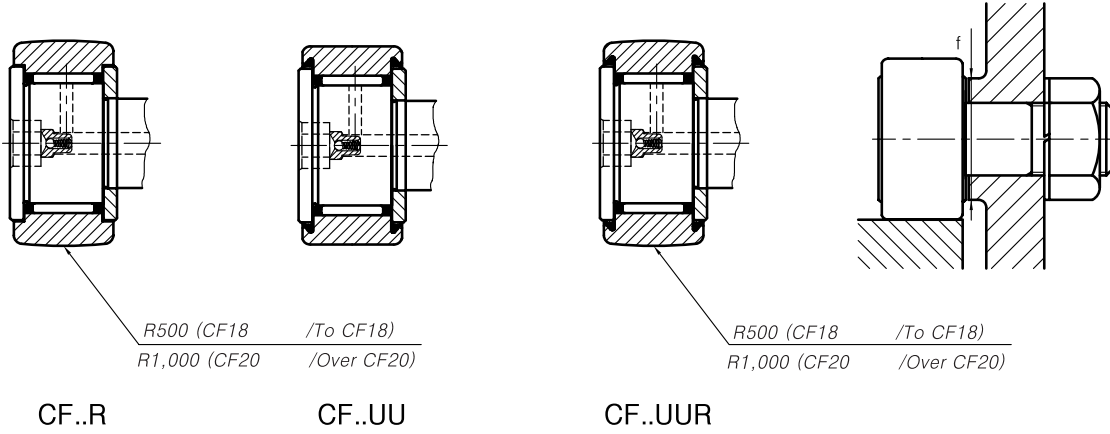
The thread size of CFA10 and CFA10-1 series are M10×1.0.

“\*” These types are produced on request.



## STUD TYPE TRACK ROLLERS

CAGE TYPE  
METRIC DIMENSION



(Dimensions) mm								f (Minimum Clamping Diameter) mm	(Basic dynamic load ratings) C Kgf	(Basic static load ratings) Co Kgf	(Limiting speed) rpm
B	B1	B3	M	g1	G1	B2	r				
7	8	17	-	-	5	-	0.3	6.8	140	90	47,000
8	9	20	-	-	6	-	0.5	8.6	190	140	37,000
9	10	23	-	-	7.5	-	0.5	9.7	230	200	29,000
11	12	28	-	-	9	-	0.5	11	330	330	25,000
11	12	32	-	-	11	-	0.5	13	390	430	20,000
12	13	36	-	-	13	-	1	15	450	630	17,000
12	13	36	-	-	13	-	1	15	450	630	17,000
14	15	40	M6×1.0	3	14	6	1.5	20	730	900	14,000
18	19.5	52	M6×1.0	3	18	8	1.5	24	1,110	1,680	10,000
20	21.5	58	M6×1.0	3	20	10	1.5	26	1,350	2,310	8,500
24	25.5	66	M6×1.0	4	22	12	1.5	36	1,900	3,180	7,000
29	30.5	80	M6×1.0	4	25	12	1.5	40	2,800	4,330	6,500
35	37	100	M6×1.0	4	32	15	2	46	4,170	7,810	5,000

Limiting speed increases 30% in oil lubrication and in case of sealed types, the limiting speed drops about 40% from the tabular data.  
After assembly and oil lubrication, a hexagonal resin plug should be necessarily stopped up.

