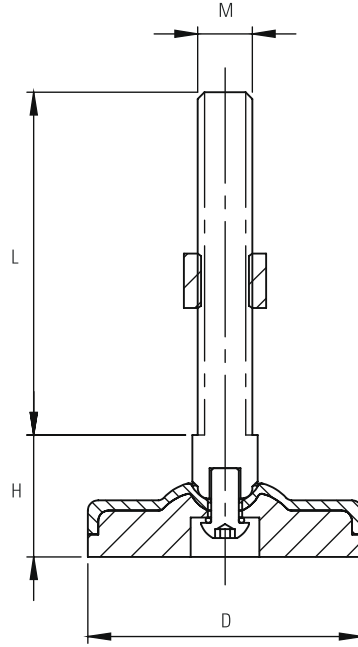


## LX SERIES Stainless Steel Feet

CODE	D (mm)	M	L (mm)	H (mm)	Load kg / pcs
LX 50 1050	50	M10x50	50	35	300
LX 50 1010	50	M10x100	100	35	300
LX 50 1250	50	M12x50	50	35	300
LX 50 1210	50	M12x100	100	35	300
LX 50 1610	50	M16x100	100	35	300
LX 80 1050	80	M10x50	50	35	750
LX 80 1010	80	M10x100	100	35	750
LX 80 1250	80	M12x50	50	35	750
LX 80 1210	80	M12x100	100	35	750
LX80 1215	80	M12x150	150	35	750
LX80 1610	80	M16x100	100	35	750
LX80 1615	80	M16x150	150	35	750
LX80 2010	80	M20x100	100	35	750
LX80 2015	80	M20x150	150	35	750
LX10 1050	100	M10x50	50	35	1000
LX10 1010	100	M10x100	100	35	1000
LX10 1250	100	M12x50	50	35	1000
LX10 1210	100	M12x100	100	35	1000
LX10 1215	100	M12x150	150	35	1000
LX10 1610	100	M16x100	100	35	1000
LX10 1615	100	M16x150	150	35	1000
LX10 2010	100	M20x100	100	35	1000
LX10 2015	100	M20x150	150	35	1000



### Stainless Steel Feet

Stainless steel base leveling feet.

Anti-slip rubber, black NBR80 shore.

