

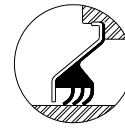
UCC 2

Cartridge Units

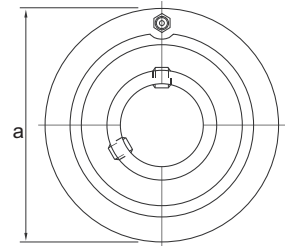
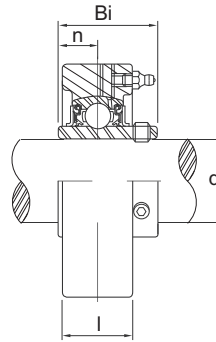
(normal-duty)



SR type seal



TRL type seal



unit No.	Shaft Dia	Dimensions (mm)				Bearing No.	Housing No.	Weight kg.
	d (mm)	a	l	Bi	n			
UCC 201 201-8	12	72	20	31.0	12.7	UC 201 201-8	C 204	0.50
UCC 202 202-10	15	72	20	31.0	12.7	UC 202 202-10	C 204	0.50
UCC 203	17	72	20	31.0	12.7	UC 203	C 204	0.50
UCC 204-12 204	20	72	20	31.0	12.7	UC 204-12 204	C 204	0.50
UCC 205-14 205-15 205 205-16	25	80	22	34.0	14.3	UC 205-14 205-15 205 205-16	C 205	0.64
UCC 206-18 206 206-19	30	85	27	38.1	15.9	UC 206-18 206 206-19	C 206	0.81
UCC 207-20 207-21 207-22 207 207-23	35	90	28	42.9	17.5	UC 207-20 207-21 207-22 207 207-23	C 207	0.93
UCC 208-24 208-25 208	40	100	30	49.2	19.0	UC 208-24 208-25 208	C 208	1.2
UCC 209-26 209-27 209-28 209	45	110	31	49.2	19.0	UC 209-26 209-27 209-28 209	C 209	1.5
UCC 210-30 210-31 210	50	120	33	51.6	19.0	UC 210-30 210-31 210	C 210	2.0
UCC 211-32 211-34 211 211-35	55	125	35	55.6	22.2	UC 211-32 211-34 211 211-35	C 211	2.2
UCC 212-36 212 212-38 212-19	60	130	38	65.1	25.4	UC 212-36 212 212-38 212-19	C 212	2.6
UCC 213-40 213	65	140	40			UC 213-40 213		3.0

