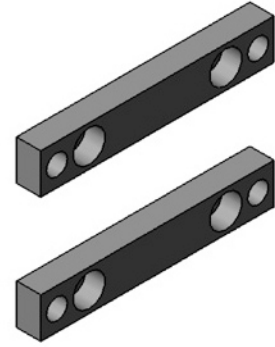
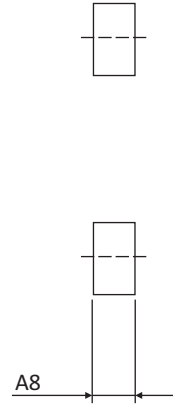
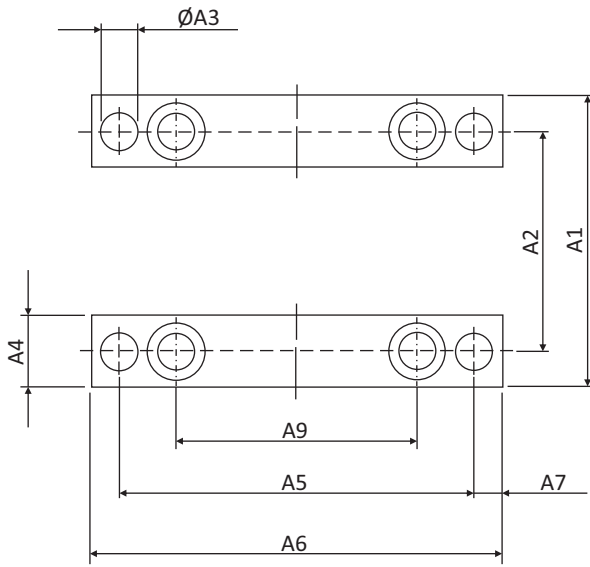


Accessories Worm gear screw- jacks

Mounting feet BL-L

Supplied loose with mounting bolts for jack. Burnished.

M 1 + 2 with version N-KGT not on side F. Standard: side E.



Size	Dimensions [mm]									Weight [kg]
	A_1	A_2	A_3	A_4	A_5	A_6	A_7	A_8	A_9	
BL - L M 0	50	38	6.5	12	75	90	7.5	10	48	0.1
BL - L M 1	72	52	8.5	20	100	120	10	10	60	0.3
BL - L M 2	83	63	8.5	20	120	140	10	10	78	0.4
BL - L M 3	105	81	11	24	150	170	10	12	106	0.8
BL - L M 4	145	115	13.5	30	204	230	13	16	150	1.7
BL - L M 5	171	131	22	40	236	270	17	25	166	3.9
BL - L J 1	205	155	26	50	250	290	20	30	170	5.8
BL - L J 2	235	170	32	65	290	340	25	40	190	10
BL - L J 3	235	170	32	65	290	340	25	40	190	10
BL - L J 4	270	190	39	80	350	410	30	50	230	20.8
BL - L J 5	330	230	45	100	430	500	35	60	290	34.4

