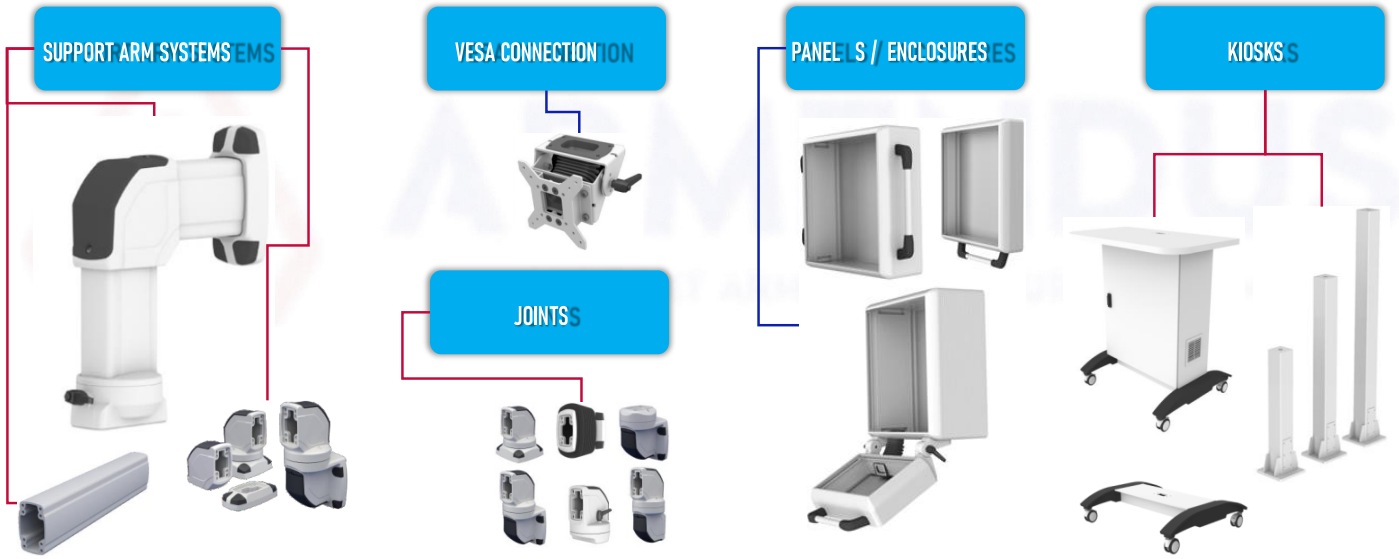
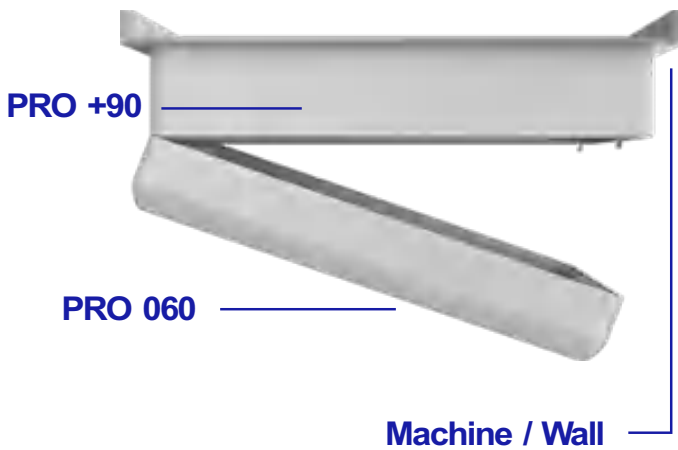
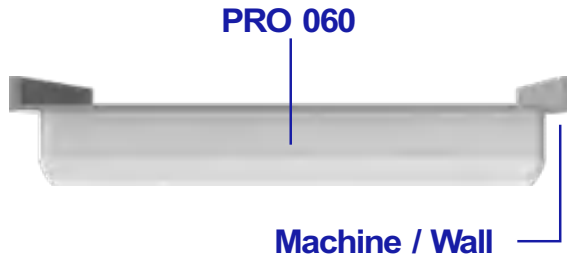


پنل و اتصالات ماشین آلات صنعتی

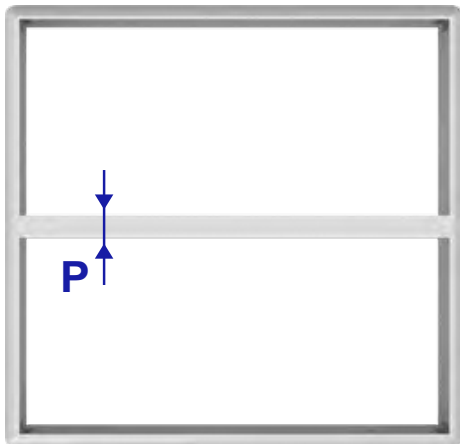


Panel Wall Mounting Application

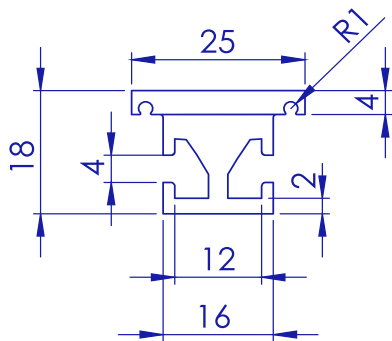
Wall application examples for PRO 060 series panel
Please contact us to find out the feasibility of the products



Panel Wall Mounting Application



P= 25 mm Front Face 25 mm



Front Sheet Installation PRO Panel



Zamak Alloys Connector



Panel Back Plate Fixed
(Screw)



Panel Back Plate Moveable
(Hinge)



Front Sheet Unprocessed

Front Sheet Unprocessed
Suitable for PRO Panels



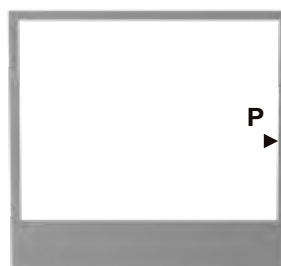
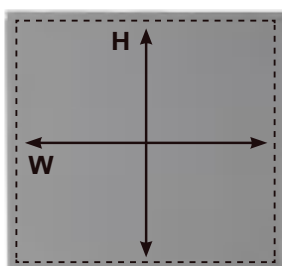
Article No	Installation Area		
	Width (mm)	Height (mm)	Thickness (mm)
PRO			
LVH2.3030	300	300	2
LVH2.3040	300	400	2
LVH2.4040	400	400	2
LVH2.4050	400	500	2
LVH2.5050	500	500	2
LVH2.5060	500	600	2
LVH2.6060	600	600	2
LVH3.3030	300	300	3
LVH3.3040	300	400	3
LVH3.4040	400	400	3
LVH3.4050	400	500	3
LVH3.5050	500	500	3
LVH3.5060	500	600	3
LVH3.6060	600	600	3

Front Sheet Processed
Suitable for PRO Panels



Article No	Installation Area		
	Width (mm)	Height (mm)	Thickness (mm)
PRO			
LVH2.3030-1	300	300	2
LVH2.3040-1	300	400	2
LVH2.4040-1	400	400	2
LVH2.4050-1	400	500	2
LVH2.5050-1	500	500	2
LVH2.5060-1	500	600	2
LVH2.6060-1	600	600	2
LVH3.3030-1	300	300	3
LVH3.3040-1	300	400	3
LVH3.4040-1	400	400	3
LVH3.4050-1	400	500	3
LVH3.5050-1	500	500	3
LVH3.5060-1	500	600	3
LVH3.6060-1	600	600	3

Front Sheet Application



P = 21,5mm Instalation Area



Compatible Panel Connections

PRO 60

PRO 090

PRO 120

PRO 150

PRO 060

PRO +90
PRO 060

PRO 090

PRO +90
PRO 090

PRO 120

PRO +90
PRO 120

PRO 150

PRO +90
PRO 150

 ARM050.400	✓	✓	✓	✓	✓	✓	✓	✓
 ARM050.830	✓	✓	✓	✓	✓	✓	✓	✓
 ARM080.310	✗	✗	✗	✗	✓	✓	✓	✓
 ARM080.320	✗	✗	✗	✗	✓	✓	✓	✓
 ARM080.321	✗	✗	✗	✗	✓	✓	✓	✓
 ARM080.400	✓	✓	✓	✓	✓	✓	✓	✓
 ARM080.826	✓	✓	✓	✓	✓	✓	✓	✓
 ARM080.830	✓	✓	✓	✓	✓	✓	✓	✓



Compatible



Incompatible

Articles starting with 'Only' are only valid for the related module.

Some modules may be compatible or incompatible according to the size dimensions of the panel frame dimensions.
Please contact us for further information



تلفن : (021) 33913364 - 33951660

فکس : (021) 33985603

PRO 60

PRO 090

PRO 120

PRO 150

PRO 060

PRO +90
PRO 060

PRO 090

PRO +90
PRO 090

PRO 120

PRO +90
PRO 120

PRO 150

PRO +90
PRO 150

 ARM080.831	✓	✓	✓	✓	✓	✓	✓	✓
 ARM080.832	✓	✗	✗	✗	✗	✗	✗	✗
 ARM080.833	✓	✓	✓	✓	✓	✓	✓	✓
 ARM080.834	✗	✗	✗	✗	✓	Only PRO120	✓	Only PRO150
 ARM080.835	✓	✓	✓	✓	✓	✓	✓	✓
 ARM080.840	✗	✗	✗	✗	✓	Only PRO120	✓	Only PRO150
 ARM130.310	✗	✗	✗	✗	✓	Only PRO120	✓	Only PRO150
 ARM130.320	✗	✗	✗	✗	✓	Only PRO120	✓	Only PRO150
 ARM130.400	✗	✗	✗	✗	✓	Only PRO120	✓	Only PRO150

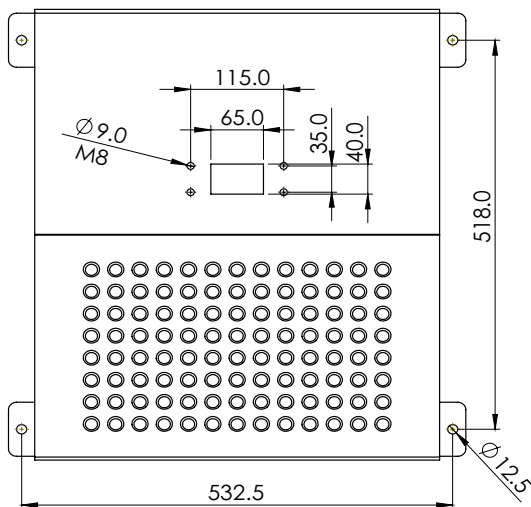
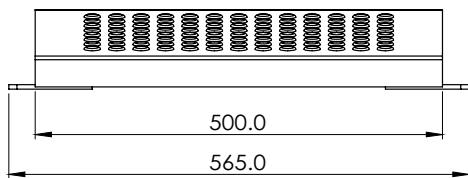
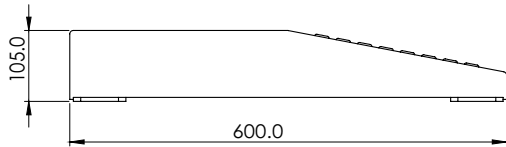
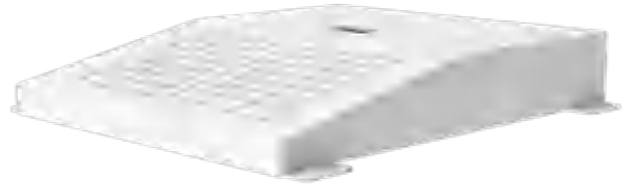
Compatible
 Incompatible

Articles starting with 'Only' are only valid for the related module.

Some modules may be compatible or incompatible according to the size dimensions of the panel frame dimensions. Please contact us for further information

Kiosk Plate

ARKS80.01



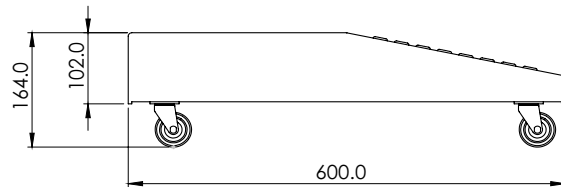
This product is produced to provide an optional placement of the electronic and operator devices such as PC and touch screen to any desired position. It is a fixed kiosk to the ground with a rectangular platform structure which balances the strength of the kiosk holding the electronic devices. It has a weight carrying capacity of 80 kilograms. The product can be redesigned in color and specifications according to the client requests.

Weight	17000 gr
Color Ral No	RAL 7035
Package	1
Package Dimension	510x110x610 mm
Movement	Fixed

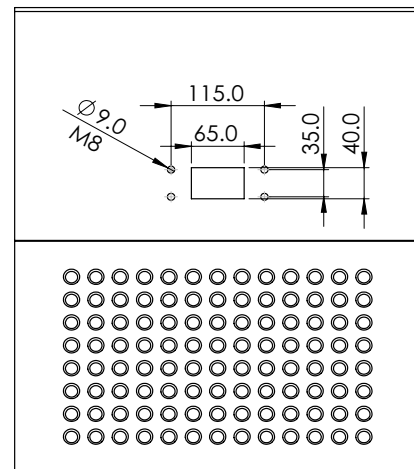
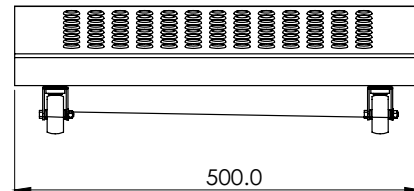


ARKS80.02

Kiosk Plate



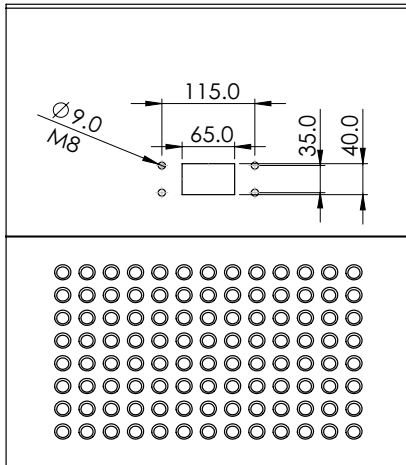
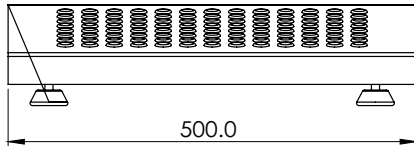
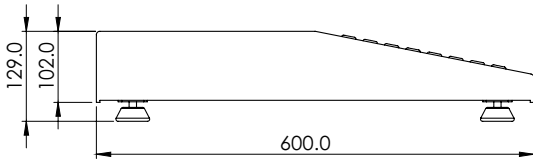
This product is produced to provide ease of movement and transportation of the electronic and operator devices such as PC and touch screen. It is a wheeled kiosk with a rectangular platform structure which balances the strength of the kiosk holding the electronic devices. It has a weight carrying capacity of 80 kilograms. The product can be redesigned in color and specifications according to the client requests.



Weight	17000 gr
Color Ral No	RAL 7035
Package	1
Package Dimension	510x110x610 mm
Movement	Modular

Kiosk Plate

ARKS80.03



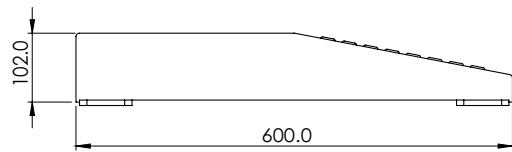
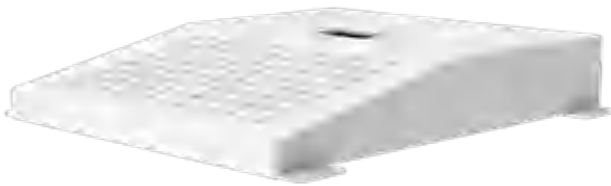
This product is produced to provide an optional placement of the electronic and operator devices such as PC and touch screen to any desired position. It is a fixed kiosk with adjustable feet with a rectangular platform structure which balances the strength of the kiosk holding the electronic devices. It has a weight carrying capacity of 80 kilograms. The product can be redesigned in color and specifications according to the client requests.

Weight	17000 gr
Color Ral No	RAL 7035
Package	1
Package Dimension	510x110x610 mm
Movement	Fixed

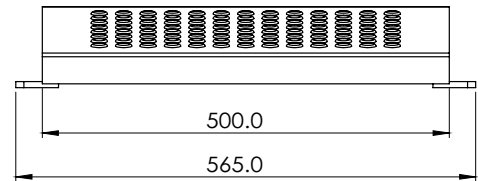


ARKS130.01

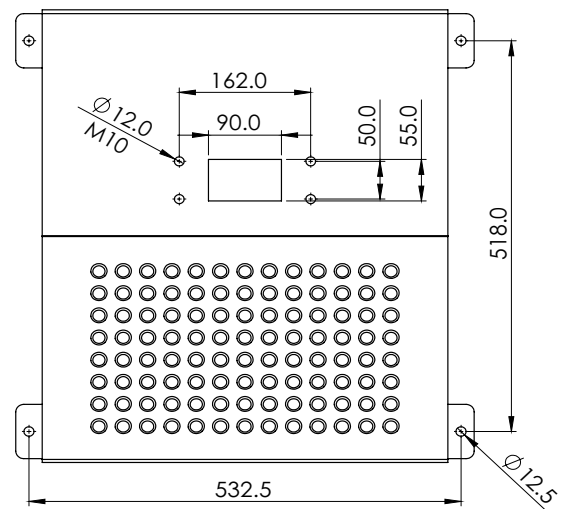
Kiosk Plate



This product is produced to provide an optional placement of the electronic and operator devices such as PC and touch screen to any desired position. It is a fixed kiosk to the ground with a rectangular platform structure which balances the strength of the kiosk holding the electronic devices. It has a weight carrying capacity of 130 kilograms. The product can be redesigned in color and specifications according to the client requests.

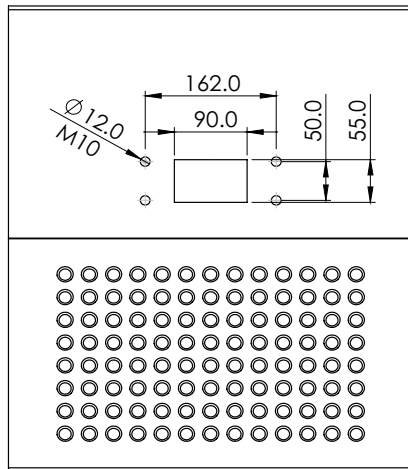
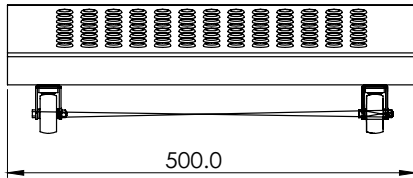
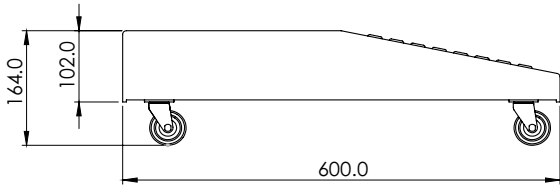


Weight	17000 gr
Color Ral No	RAL 7035
Package	1
Package Dimension	510x110x610 mm
Movement	Fixed



Kiosk Plate

ARKS130.02



This product is produced to provide ease of movement and transportation of the electronic and operator devices such as PC and touch screen. It is a wheeled kiosk with a rectangular platform structure which balances the strength of the kiosk holding the electronic devices. It has a weight carrying capacity of 130 kilograms.

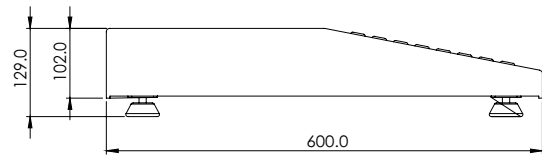
The product can be redesigned in color and specifications according to the client requests.

Weight	17000 gr
Color Ral No	RAL 7035
Package	1
Package Dimension	510x110x610 mm
Movement	Modular

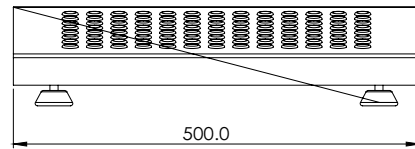


ARKS130.03

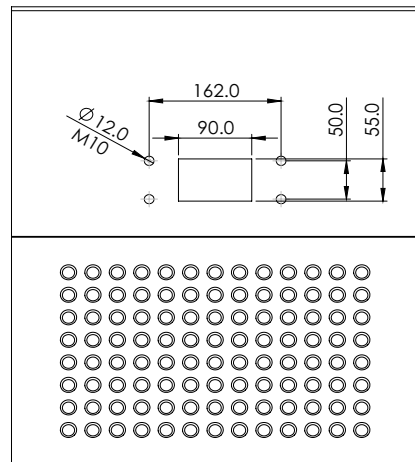
Kiosk Plate

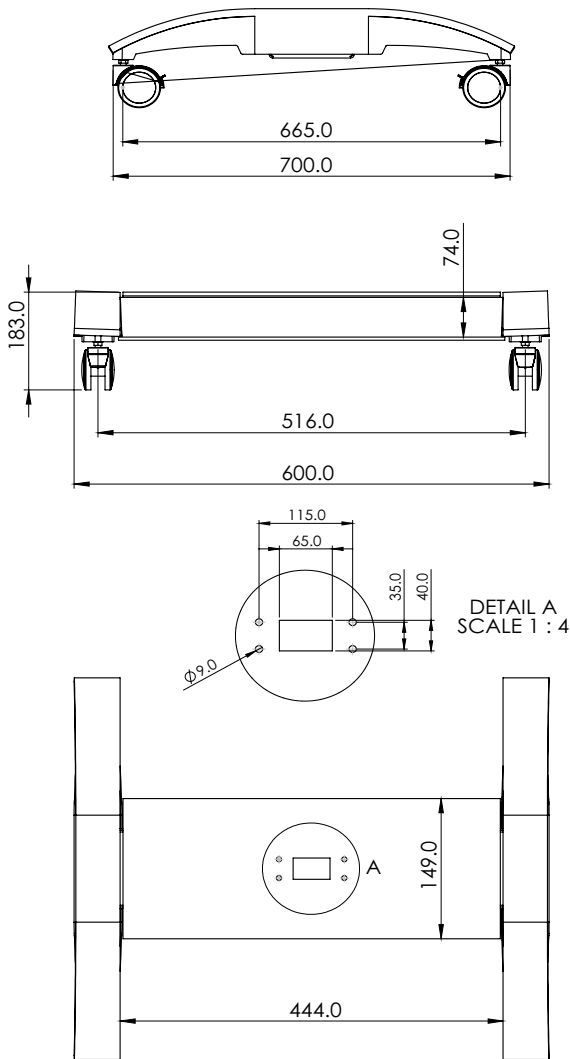


This product is produced to provide an optional placement of the electronic and operator devices such as PC and touch screen to any desired position. It is a fixed kiosk with adjustable feet with a rectangular platform structure which balances the strength of the kiosk holding the electronic devices. It has a weight carrying capacity of 130 kilograms. The product can be redesigned in color and specifications according to the client requests.



Weight	17000 gr
Color Ral No	RAL 7035
Package	1
Package Dimension	510x110x610 mm
Movement	Fixed





This product is produced to provide ease of movement and transportation of the electronic and operator devices such as PC and touch screen. It is a wheeled slim kiosk with a rectangular platform structure which balances the strength of the kiosk holding the electronic devices. It has a weight carrying capacity of 80 kilograms. The product can be redesigned in color and specifications according to the client requests.

Weight	12000 gr
Color Ral No	RAL 7035 / RAL 7016
Package	1
Package Dimension	335x705x95 mm
Movement	Modular

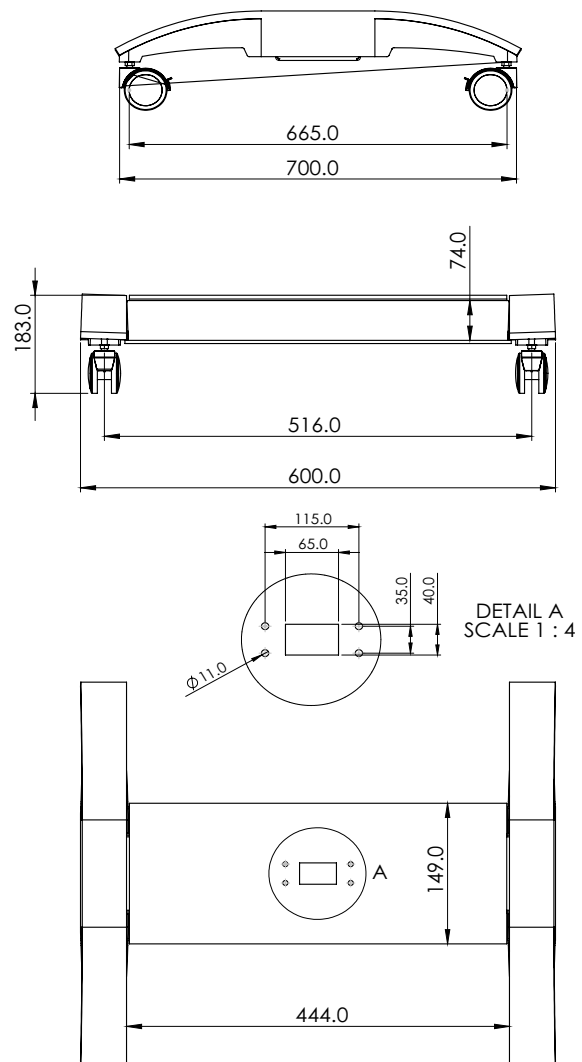


ARKH130

Kiosk Slim



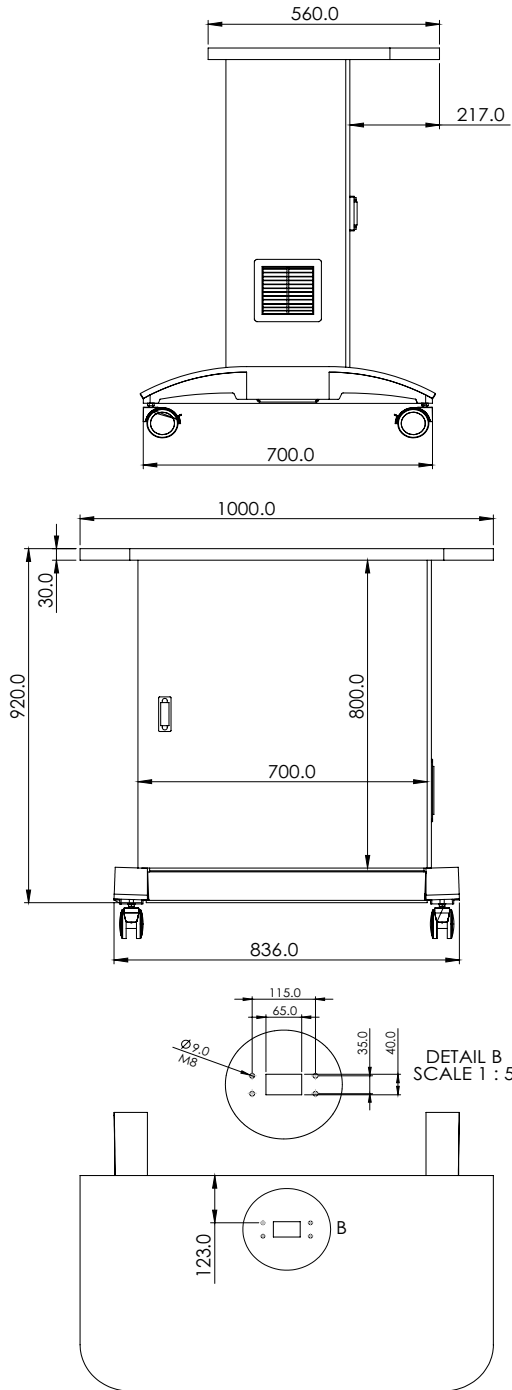
This product is produced to provide ease of movement and transportation of the electronic and operator devices such as PC and touch screen. It is a wheeled slim kiosk with a rectangular platform structure which balances the strength of the kiosk holding the electronic devices. It has a weight carrying capacity of 130 kilograms. The product can be redesigned in color and specifications according to the client requests.



Weight	12000 gr
Color Ral No	RAL 7035 / RAL 7016
Package	1
Package Dimension	335x705x95 mm
Movement	Modular

Kiosk PC Cabinet

ARKPC01



Kiosk PC Cabinets are designed by adding to the kiosk a closed cabinet system on wheeled plate which will provide an extra protection for the computers and will facilitate the functionality of the control and the movement of electronic operating systems. It also produced with an extra enlarged upper surface that facilitates the placement of accessories such as a useful cover design, and the ventilation fan that prevents deformation inside the cabinet. The standard dimensions of the model are 1010 mm in height, 1000 mm in width and 300 mm in depth. The product can be redesigned in color and specifications according to the client requests.

Weight	100.000 gr
Color Ral No	RAL 7035
Package	1
Package Dimension	650x710x1200 mm
Movement	Modular

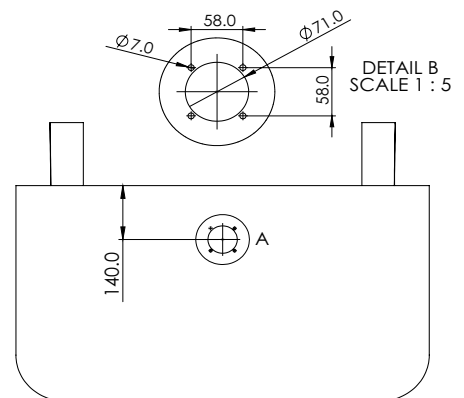
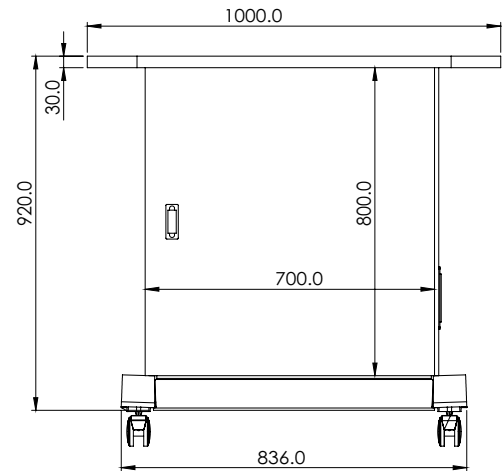
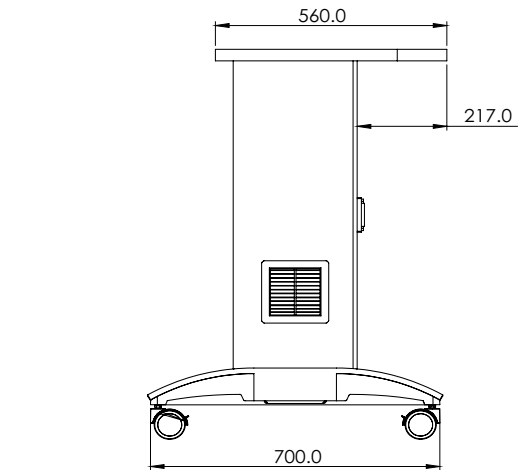


ARKPC02

Kiosk PC Cabinet



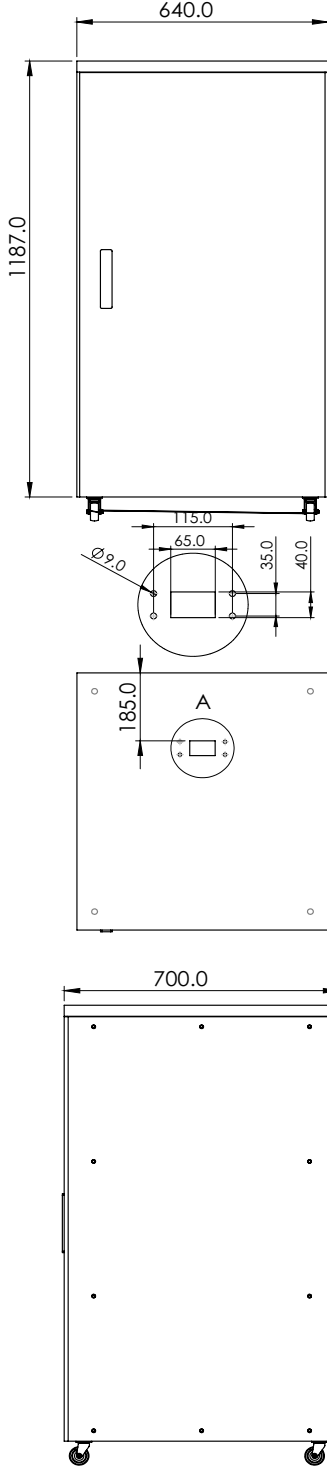
Kiosk PC Cabinets are designed by adding to the kiosk a closed cabinet system on wheeled plate which will provide an extra protection for the computers and will facilitate the functionality of the control and the movement of electronic operating systems. It also produced with an extra enlarged upper surface that facilitates the placement of accessories such as a useful cover design, and the ventilation fan that prevents deformation inside the cabinet. The standard dimensions of the model are 1010 mm in height, 1000 mm in width and 300 mm in depth. The product can be redesigned in color and specifications according to the client requests.



Weight	100.000 gr
Color Ral No	RAL 7035
Package	1
Package Dimension	650x710x1200 mm
Movement	Modular

Kiosk Cabinet Systems

ARKC01



ARM.130.811 Warning Lamp Cover (M18) is placed on the corner module ensuring an area for the warning lamp to be placed. The warning lamp connection diameter is M18×1.5

Weight	1000 gr
Color Ral No	RAL 7035 (Cover RAL 7016)
Package	1
Package Dimension	150x160x140 mm
Material	Aluminum
Movement	Rotatable 315°
Diameter	Ø130 mm



تلفن : (021) 33913364 - 33951660

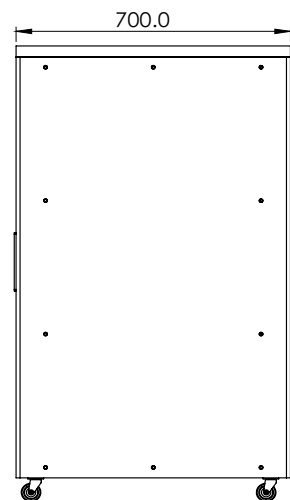
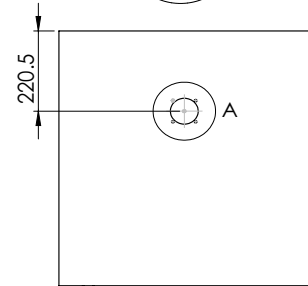
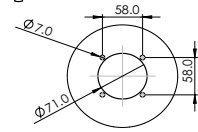
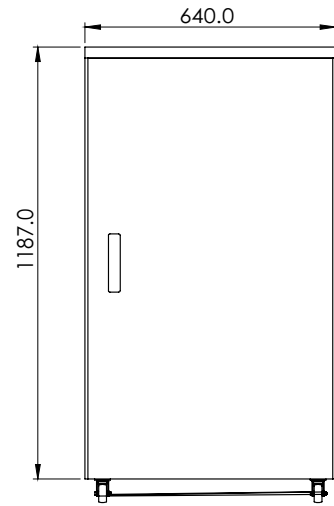
فکس : (021) 33985603

ARKC02

Kiosk Cabinet Systems

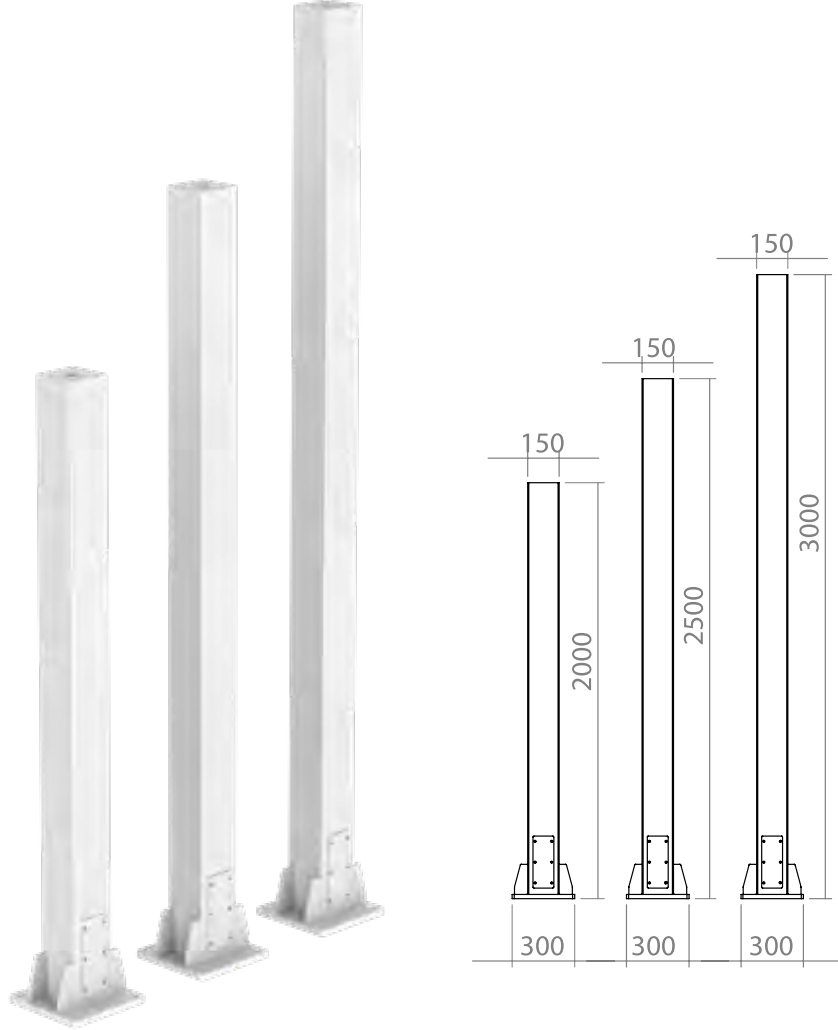


130/080 Support Arm Adaptor is used to secure the connection between ARM.130 and ARM.080. Its is designed for configurations of heavy loads. The configurations with this product prevent vibrating and sagging as a result of heavy loads. This support Arm Adaptor can be used horizontally or vertically.



Weight	1000 gr
Color Ral No	RAL 7035 (Cover RAL 7016)
Package	1
Package Dimension	150x160x140 mm
Material	Aluminum
Movement	Rotatable 315°
Diameter	Ø130 mm

Coupling Towers KL150 Series



We use an ergonomic coupling tower which provides a strong support for your application. Towers hold and protect the industrial controllers, PCs and operating panels and offers a secure accommodation for all connected cables. We have many tower dimensions and the RAL 7035 is the standard color used.

Tower Dimensions :

150x150 (LxW) and 2.0 , 2.5 , or 3.0 mt Height

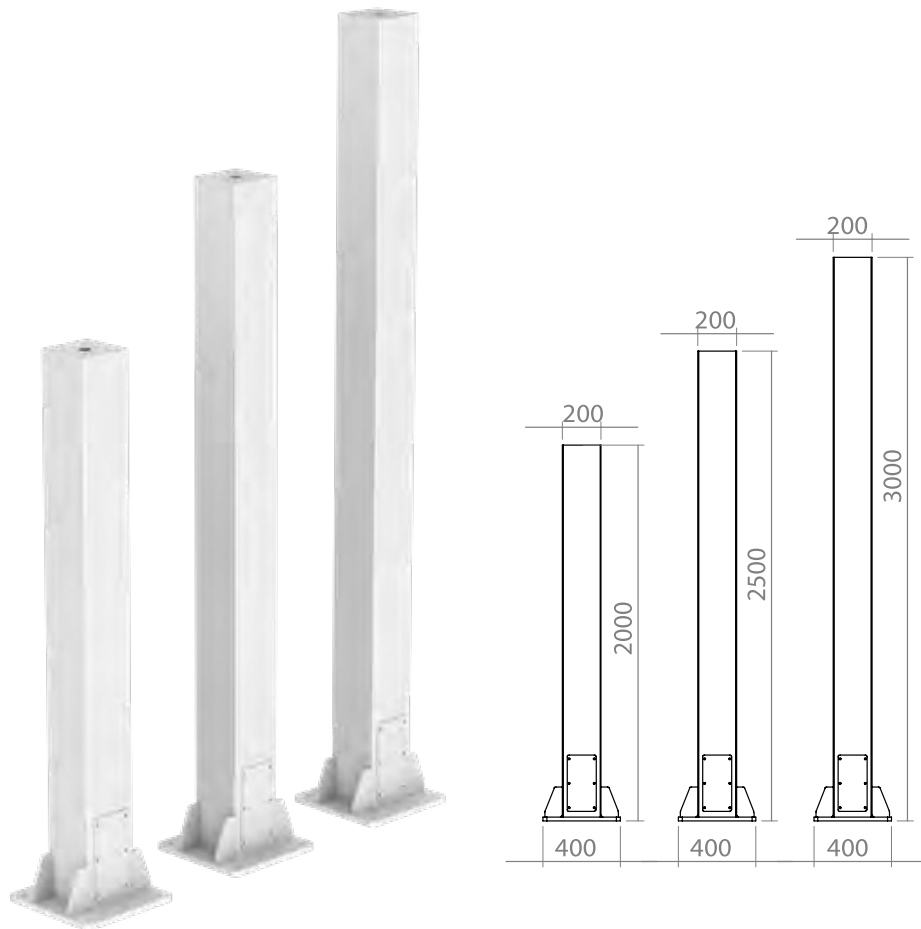
200x200 (LxW) and 2.0 , 2.5 , or 3.0 mt Height



تلفن : (021) 33913364 - 33951660

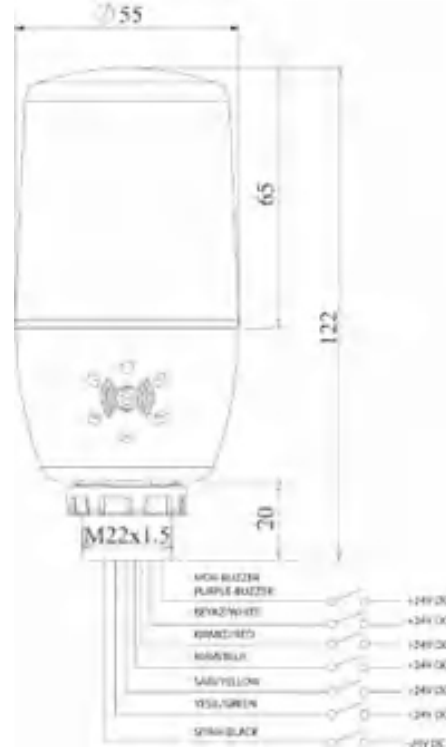
فکس : (021) 33985603

Coupling Towers KL200 Series



	KL150.200	KL150.250	KL150.300	KL200.200	KL200.250	KL200.300
Weight (kg)	45	55	65	70	80	100
Length (mm)	2000	2500	3000	2000	2500	3000
Color No	7035	7035	7035	7035	7035	7035
Package	1	1	1	1	1	1
Package Dimension (mm)	320x320x2020	320x320x2520	320x320x3020	420x420x2020	420x420x2520	420x420x3020
Movement	Fixed	Fixed	Fixed	Fixed	Fixed	Fixed

Warning Lamps ARTB.01



LED Signal Lights are used as a fast-warning indication for the operator of a malfunction or any issue related to the machine. Our LED lights are compatible with our support arm series. Features include multicolored lights in one level with 5 color options, Ø22 mm opening for electrical connection, LED and flasher options.

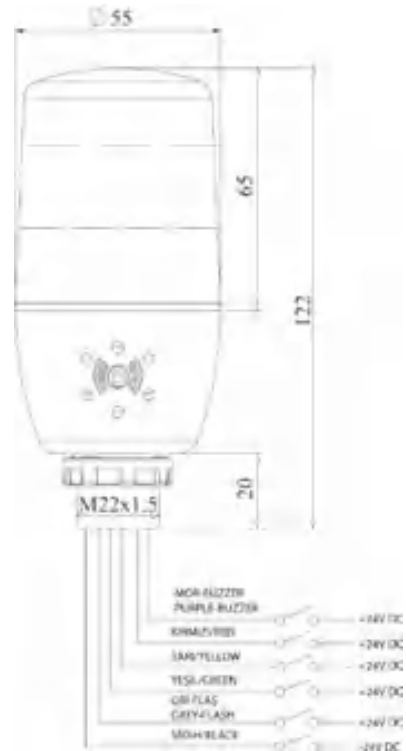
- 22 mm coupling nut
- LED or Flasher LED option (on the same block)
- 90 dB buzzer
- 24 V dc
- One block with color options



تلفن : (021) 33913364 - 33951660

فکس : (021) 33985603

Warning Lamps ARTB.02



LED Signal Lights are used as a fast-warning indication for the operator of a malfunction or any issue related to the machine. Our LED lights are compatible with our support arm series. Features include multicolored lights in three level with 3 color options, Ø22 mm opening for electrical connection, LED and flasher options.

- 22 mm coupling nut
- LED or Flasher LED option (on the same block)
- 90 dB buzzer
- 24 V dc
- 3 level, 3 color options

