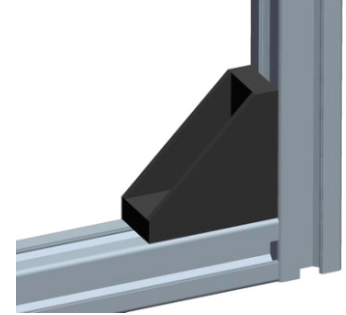
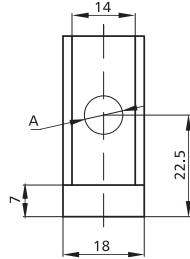
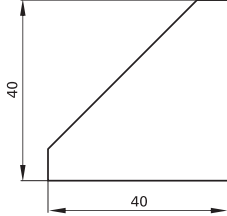


## Alu Profile Accessories/Connectors/Angle Connectors & Caps

**NEW**



Item No.	A	Material	Finish	PCS/CTN	KGS/CTN	CTN SIZE (mm)
1840-8	Φ8.5	Die-cast Alu	Dull Polished	300	8.5	350*225*180
1840-6	Φ6.5	Die-cast Alu	Dull Polished	300	8.8	350*225*180

