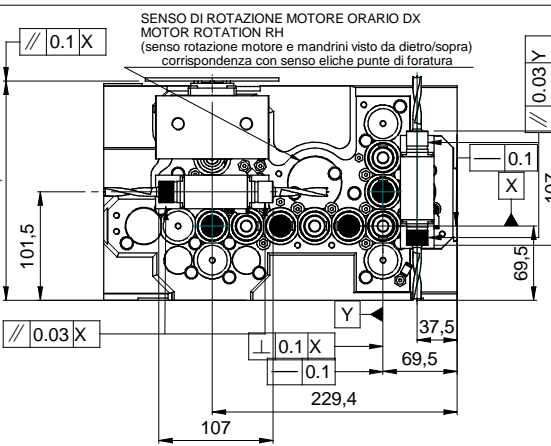
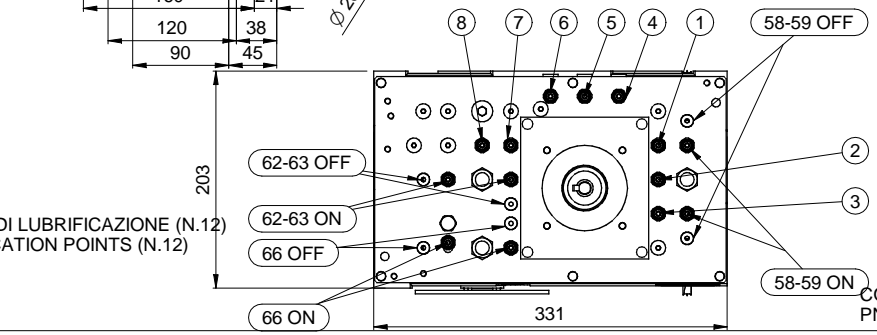
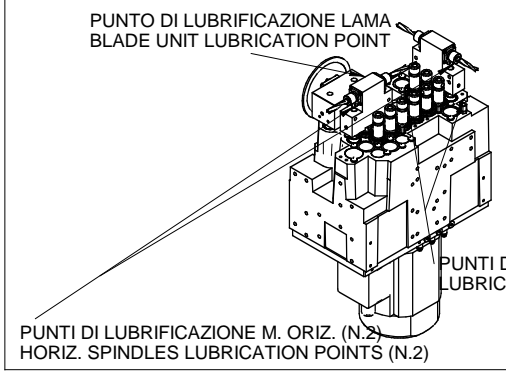
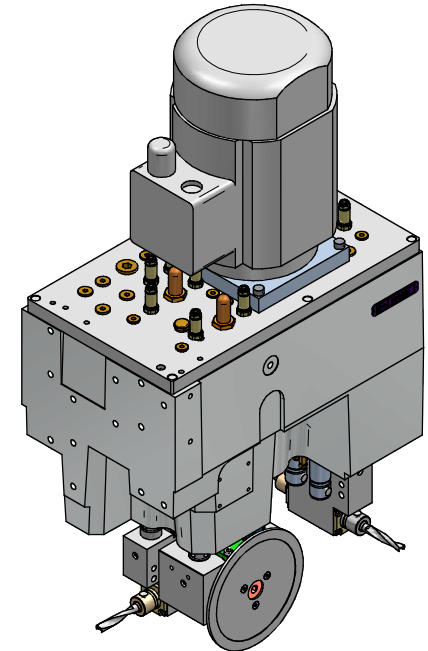
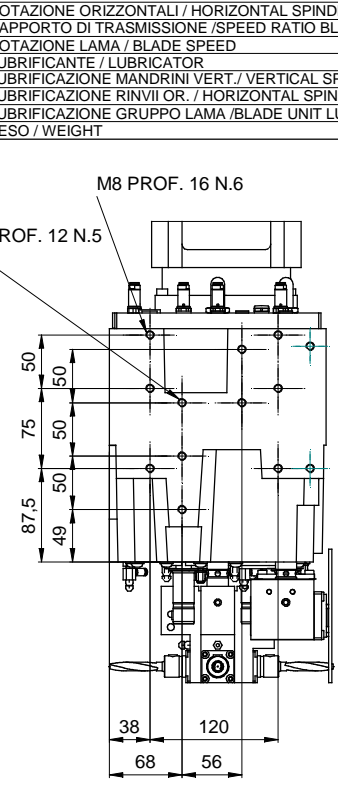
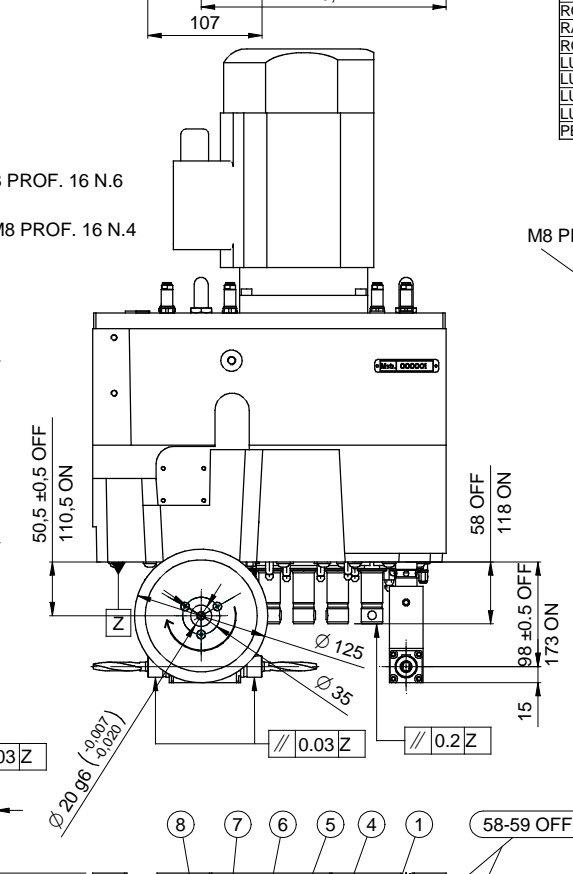
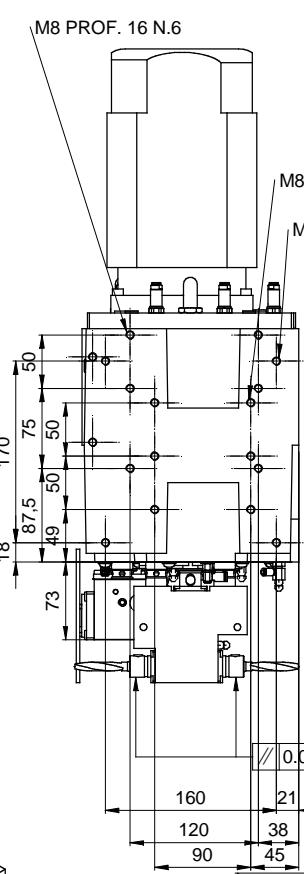
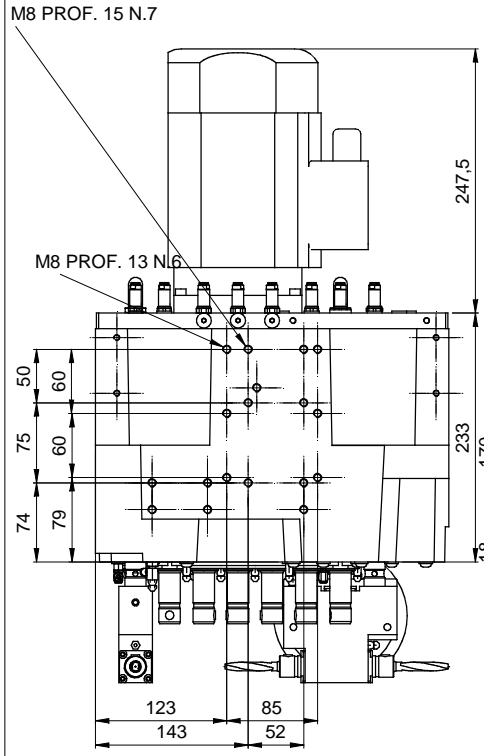


- ROTAZIONE DESTRA / RIGHT ROTATION
- ROTAZIONE SINISTRA / LEFT ROTATION
- ROTAZIONE DESTRA / RIGHT ROTATION
- ROTAZIONE SINISTRA / LEFT ROTATION



| CARATTERISTICHE TECNICHE / TECHNICAL FEATURES               |   |
|---|---|
| MANDRINI VERTICALI / VERTICAL SPINDLES                      | 8   |
| MANDRINI ORIZZONTALI / HORIZONTAL SPINDLES                  | 4   |
| ATTACCO PUNTE / TOOL CONNECTION                             | 10 H7 mm                                      |
| INTERASSE PUNTE / DISTANCE BETWEEN CENTERS                  | 32 mm   |
| MAX LUNGHEZZA PUNTE / MAX BORING BITS LENGHT                | 70 mm   |
| DIMENSIONE LAMA / BLADE DIMENSION                           | 125 mm  |
| CENTRAGGIO LAMA / BLADE SHAFT                               | 20 g6 mm                                      |
| CORSA MANDRINI VERTICALI / VERTICAL SPINDLES STROKE         | 60 mm (SINGLE EFFECT CYLINDER)                |
| CORSA MANDRINI ORIZZONTALI / HORIZONTAL SPINDLES STROKE     | 75 mm (DOUBLE EFFECT CYLINDERS)               |
| CORSA GRUPPO LAMA / BLADE UNIT STROKE                       | 60 mm (DOUBLE EFFECT CYLINDERS)               |
| SPINTA VERTICALE MANDRINI / VERTICAL SPINDLES THRUST        | 335 N ( 6bar) - 550 N (9bar)                  |
| POTENZA MOTORE / MOTOR POWER                                | 2.2 kW  |
| TENSIONE NOMINALE / RATED VOLTAGE                           | 230 / 400 V                                   |
| CORRENTE NOMINALE / RATED CURRENT                           | 8.34 A / 4.8 A                                |
| VELOCITA' ROTAZIONE MOTORE / MOTOR RATED SPEED              | 2750 RPM                                      |
| SENSO DI ROTAZIONE MOTORE / MOTOR ROTATION                  | DESTRO / RIGHT                                |
| FREQUENZA NOMINALE / RATED FREQUENCY                        | 50 Hz   |
| COSφ  | 0.85  |
| ALIMENTAZIONE MOTORE / ELECTRICAL SUPPLY                    | 50 Hz / 25-95 Hz                              |
| RAPPORTO DI TRASMISSIONE / SPEED RATIO (SPINDLES/MOTOR)     | 1.5   |
| ROTAZIONE VERTICALI / VERTICAL SPINDLES SPEED               | 4000 RPM / 2000-8000 RPM                      |
| ROTAZIONE ORIZZONTALI / HORIZONTAL SPINDLES SPEED           | 4000 RPM / 2000-8000 RPM                      |
| RAPPORTO DI TRASMISSIONE / SPEED RATIO BLADE/MOTOR          | 1.917   |
| ROTAZIONE LAMA / BLADE SPEED                                | 5270 RPM / 2500-10000 RPM                     |
| LUBRIFICANTE / LUBRICATOR                                   | GREASE KLUEBER ISOFLEX NBU15                  |
| LUBRIFICAZIONE MANDRINI VERT / VERTICAL SPINDLES LUBRIC.    | 1.0 cc / 500 h (OGNI MANDRINO / EACH SPINDLE) |
| LUBRIFICAZIONE RINVII OR. / HORIZONTAL SPINDLES LUBRICATION | 2.0 cc / 1000 h                               |
| LUBRIFICAZIONE GRUPPO LAMA / BLADE UNIT LUBRICATION         | 5.0 cc / 1000 h                               |
| PESO / WEIGHT   | 50 kg   |



CONNESSIONI PNEUMATICHE E4  
PNEUMATIC CONNECTIONS E4

|                          |                   |                  |   |   |
|--------------------------|-------------------|------------------|---|---|
| 01 24022010              | D. NICOLINI       | mod. ininfluente |   |   |
| Rev / Data / Date        | Firma / Signature |                  | Descrizione ultima modifica / Last change description | N° Modifica / Change ID                                     |
|                          |                   |                  | Verifica / Finitura / SCM specific ST231D7G           | Superficie / Surface (M)                                    |
|                          |                   |                  | Trattamento termico / Heat treatment                  | Trattamento termico / Heat Treatment (M specific: ST234D7G) |
|                          |                   |                  | Stato di fornitura / State of supply                  |   |
|                          |                   |                  | CF3   |   |
|                          |                   |                  | Massa / Mass  | 50.916  |
|                          |                   |                  | Materiali / Material (MCM specific: ST235D7G)         | Vedi Tabella  |
|                          | D. Nicolini       | 18/02/2015       |   |   |
| FORATRICE F12L - 8V+40+L |                   |                  |   |   |
| 1:2.5                    |                   |                  | F12B.4H.00  |   |
|                          |                   |                  | Rev   | 01  |
|                          |                   |                  | Status  |   |
|                          |                   |                  | Tav. N. 2   | 2/2   |