

UKC 2

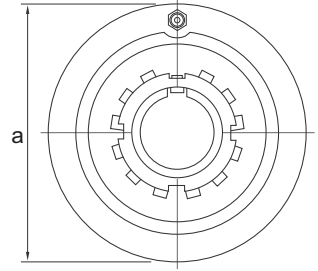
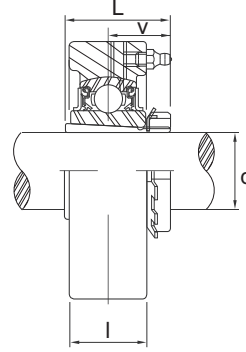
Cartridge Units(with adapter mounted)
(normal-duty)



SR type seal



TRL type seal



unit No.	Shaft Dia	Dimensions (mm)				Bearing No.	Housing No.	Adapter Used	Weight kg.
	d (mm)	a	l	L	v				
UKC 205	20	80	22	31	19.5	UK 205	C 205	HE 305 H 305	0.68
UKC 206	25	85	27	34	21	UK 206	C 206	HS 306 HA 306 H 306 HE 306	0.85
UKC 207	30	90	28	36	22.5	UK 207	C 207	HS 307 H 307 HA 307	0.97
UKC 208	35	100	30	39	24.5	UK 208	C 208	HE 308 HS 308 H 308	1.3
UKC 209	40	110	31	41	26	UK 209	C 209	HA 309 HE 309 H 309 HS 309	1.6
UKC 210	45	120	33	43	27.5	UK 210	C 210	HA 310 HE 310 H 310	2.0
UKC 211	50	125	35	45	28.5	UK 211	C 211	HS 311 HA 311 H 311 HE 311	2.3
UKC 212	55	130	38	49	31	UK 212	C 212	HS 312 H 312	2.5
UKC 213	60	140	40	52	33	UK 213	C 213	HA 313 HE 313 H 313 HS 313	3.0

