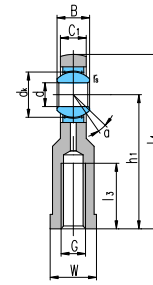
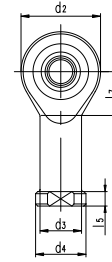


SI...C



SI...ETL-2RS



SIS...ETL-2RS

Sliding contact surfaces: Steel / PTFE composite material( $d \leq 30$ )  
Steel / PTFE fabric( $d \geq 15$ )

Bearing number	Dimensions mm																Load Ratings kN		Weight $\approx$ kg
	d	B	d <sub>k</sub>	C <sub>1</sub> max	d <sub>2</sub>	G 6H	h <sub>1</sub>	l <sub>3</sub> min	l <sub>4</sub>	l <sub>5</sub>	l <sub>7</sub>	W	d <sub>3</sub>	d <sub>4</sub>	r <sub>s</sub> min	$\alpha^\circ$ $\approx$	Dynamic	Static	
SI5C	5	6	10	4.5	21	M5	30	11	40.5	5	11.5	10	10	13	0.3	13	3.6	8.1	0.023
SI6C	6	6	10	4.5	21	M6	30	11	40.5	5	11.5	11	11	13	0.3	13	3.6	8.1	0.023
SI8C	8	8	13	6.5	24	M8	36	15	48	5	13	13	13	16	0.3	15	5.8	12.9	0.040
SI10C	10	9	16	7.5	29	M10	43	20	57.5	6.5	15	16	16	19	0.3	12	8.6	17.6	0.065
SI12C	12	10	18	8.5	34	M12	50	23	67	7	18	18	19	22	0.3	10	11	24.5	0.108
SI15C	15	12	22	10.5	40	M14	61	30	81	8	21	21	21	26	0.3	8	18	36	0.169
SI15ETL-2RS																	25		
SI17C	17	14	25	11.5	46	M16	67	34	90	10	24	27	25	29	0.3	10	22	45	0.235
SI17ETL-2RS																	32		
SI20C	20	16	29	13.5	53	M20X1.5	77	40	103.5	10	25.5	30	28	34	0.3	9	31	60	0.335
SI20ETL-2RS																	45		
SI25C	25	20	35.5	18	64	M24X2	94	48	126	12	33	36	35	42	0.6	7	51	85	0.665
SI25ETL-2RS																	85		
SI30C	30	22	40.7	20	73	M30X2	110	56	146.5	15	37.5	46	42	50	0.6	6	65	110	1.05
SI30ETL-2RS																	110		
SI35ETL-2RS	35	25	47	22	82	M36X3	125	60	166	15	40	55	48	58	0.6	6	140	146	1.50
SI40ETL-2RS	40	28	53	24	92	M39X3	142	65	188	18	47	60	52	65	0.6	7	175	180	2.05
SIS40ETL-2RS	40	28	53	24	92	M42X3	142	65	188	18	47	55	52	65	0.6	7	99	180	1.94
SI45ETL-2RS	45	32	60	28	102	M42X3	145	65	196	20	52	65	58	70	0.6	7	225	240	2.72
SIS45ETL-2RS	45	32	60	27	102	M45X3	145	65	196	20	52	60	58	70	0.6	7	127	240	2.61
SI50ETL-2RS	50	35	66	31	112	M45X3	160	68	216	20	57	70	62	75	0.6	6	275	290	3.48
SIS50ETL-2RS	50	35	66	31	112	M52X3	160	69	216	20	57	65	62	75	0.6	6	156	260	3.24
SI60ETL-2RS	60	44	80	39	135	M52X3	175	70	242.5	20	68.5	80	70	88	1	6	430	450	5.55
SIS60ETL-2RS	60	44	80	39	135	M60X4	175	73	242.5	20	68.5	75	70	88	1	6	245	300	4.99
SI70ETL-2RS	70	49	92	43	160	M56X4	200	80	280	20	81	85	80	98	1	6	550	610	8.72
SIS70ETL-2RS	70	49	92	42	160	M72X4	200	80	280	20	81	80	85	98	1	6	313	470	8.33
SI80ETL-2RS	80	55	105	48	180	M64X4	230	85	320	25	91	95	95	110	1	6	705	750	12.9
SIS80ETL-2RS	80	55	105	47	180	M80X4	230	85	320	25	91	100	95	110	1	6	400	600	11.7

Can supply other rod ends with different pitch or accuracy of thread.

For left-hand thread, suffix "L" is added to bearings number and thread sign, e.g. SIL20C M20X1.5L-6H.

