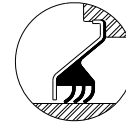


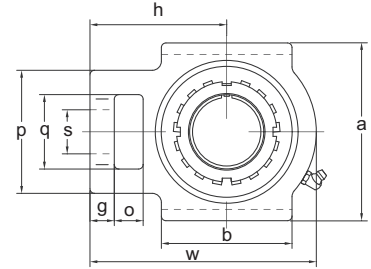
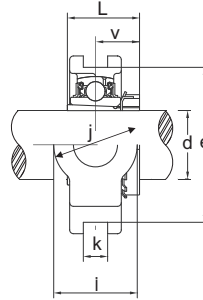
UKST 2 (wide Inch solt) UKT 2 (narrow metric solt) Take-up Units (normal-duty)



SR type seal



TRL type seal



unit No.	Shaft Dia in d	Dimensions (In.)															Bearing No.	Housing No.	Adapter Used	Wt lb.
		o	g	p	q	s	b	k	e	a	w	j	i	h	L	v				
UKST 205-12	3/4	5/8	1 1/32	2	1 1/4	3/4	2	1 7/32	2 63/64	3 1/2	3 19/16	1 1/4	1 1/16	2 7/16	1.220	0.768	UK 205-12	ST 205	HE 305	1.93
UKST 206-14	7/8																UK 206-14		HS 306	
UKST 206-15	1 1/16	5/8	1 1/32	2 7/32	1 15/32	55/64	2 1/4	1 7/32	3 1/2	4 1/32	4 7/16	1 15/32	1 3/32	2 3/4	1.339	0.827	UK 206-15	ST 206	HA 306	2.86
UKST 206-16	1																UK 206-16		HE 306	
UKST 207-18	1 1/8	5/8	1/2	2 17/32	1 15/32	55/64	2 17/32	1 7/32	3 1/2	4 1/32	5 3/32	1 15/32	1 3/16	3 1/16	1.418	0.886	UK 207-18	ST 207	HS 307	3.74
UKST 207-19	1 3/16																UK 207-19		HA 307	
UKST 208-20	1 1/4	3/4	5/8	3 3/32	1 15/16	1 5/64	3 3/32	1 1/16	4 1/64	4 1/2	5 21/32	1 15/16	1 5/16	3 15/32	1.536	0.965	UK 208-20	ST 208	HE 308	5.5
UKST 208-22	1 3/8																UK 208-22		HS 308	
UKST 209-23	1 7/16																UK 209-23		HA 309	
UKST 209-24	1 1/2	3/4	5/8	3 3/32	1 15/16	1 5/64	3 3/32	1 1/16	4 1/64	4 19/32	5 21/32	1 15/16	1 3/8	3 7/16	1.614	1.024	UK 209-24	ST 209	HE 309	5.5
UKST 209-26	1 5/8																UK 209-26		HS 309	
UKST 210-27	1 11/16	3/4	5/8	3 3/32	1 15/16	1 5/64	3 3/8	1 1/16	4 1/64	4 19/32	5 7/8	1 15/16	1 15/32	3 17/32	1.693	1.083	UK 210-27	ST 210	HA 310	5.94
UKST 210-28	1 3/4																UK 210-28		HE 310	
UKST 211-30	1 7/8																UK 211-30		HS 311	
UKST 211-31	1 15/16	1	3/4	4 1/32	2 17/32	1 3/8	3 3/4	1 1/16	5 1/8	5 3/4	6 23/32	2 17/32	1 1/2	4 3/16	1.772	1.122	UK 211-31	ST 211	HA 311	9.02
UKST 211-32	2																UK 211-32		HE 311	
UKST 212-34	2 1/8	1 1/4	3/4	4 1/32	2 17/32	1 3/8	4 1/32	1 1/16	5 1/8	5 3/4	7 5/8	2 17/32	1 21/32	4 1/16	1.929	1.220	UK 212-34	ST 212	HS 312	10.56
UKST 213-36	2 1/4																UK 213-36		HE 313	
UKST 213-38	2 3/8	1 1/4	1 1/16	4 3/8	2 3/4	1 39/64	4 3/4	1 1/16	5 15/16	6 9/16	8 13/16	2 3/4	1 23/32	5 13/32	2.047	1.299	UK 213-38	ST 213	HS 313	14.96

unit No.	Shaft Dia d(mm)	Dimensions (mm)															Bearing No.	Housing No.	Adapter Used	Wt kg.
		o	g	p	q	s	b	k	e	a	w	j	i	h	L	v				
UKT 205	20	16	10	51	32	19	51	12	76	89	97	32	24	62	31	19.5	UK 205	T 205	H 305	0.88
UKT 206	25	16	10	56	37	22	57	12	89	102	113	37	28	70	34	21	UK 206	T 206	H 306	1.3
UKT 207	30	16	13	64	37	22	64	12	89	102	129	37	30	78	36	22.5	UK 207	T 207	H 307	1.7
UKT 208	35	19	16	83	49	29	83	16	102	114	144	49	33	88	39	24.5	UK 208	T 208	H 308	2.5
UKT 209	40	19	16	83	49	29	83	16	102	117	144	49	35	87	41	26	UK 209	T 209	H 309	2.5
UKT 210	45	19	16	83	49	29	86	16	102	117	149	49	37	90	43	27.5	UK 210	T 210	H 310	2.7
UKT 211	50	25	19	102	64	35	95	22	130	146	171	64	38	106	45	28.5	UK 211	T 211	H 311	4.1
UKT 212	55	32	19	102	64	35	102	22	130	146	194	64	42	119	49	31	UK 212	T 212	H 312	4.8
UKT 213	60	32	21	111	70	41	121	26	151	167	224	70	44	137	52	33	UK 213	T 213	H 313	6.8
UKT 215	65	32	21	111	70	41	121	26	151	167	232	70	48	140	56	35.5	UK 215	T 215	H 315	7.4
UKT 216	70	32	21	111	70	41	121	26	165	184	235	70	51	140	61	39	UK 216	T 216	H 316	8.5
UKT 217	75	33	29	124	73	48	157	30	173	198	260	73	54	162	64	41	UK 217	T 217	H 317	11.2

