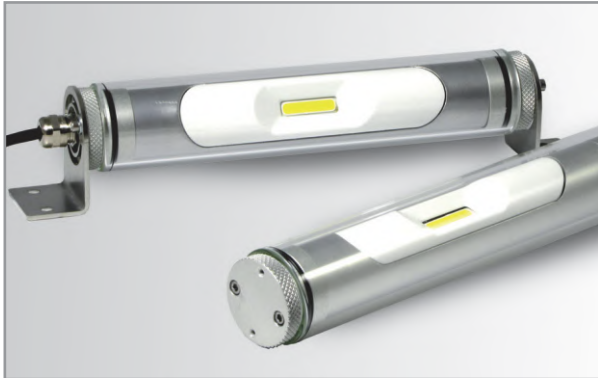


HE-T-CITY

The HE-T-CITY is perfect for the permanent illumination of machine interiors, is available in four sizes of 6 W, 12 W, 18 W, and 24 W.



HE-T-CITY

The housing of the HE-T-CITY is made of aluminum with a sheathing made from borosilicate glass. The encapsulated design prevents the penetration of foreign particles or moisture, maintaining the high quality of the light.

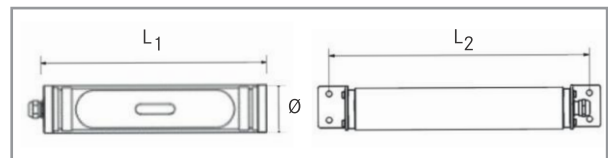


HE-T-CITY with mounting brackets

All versions meet the requirements of the protection class IP 68. Thanks to the long life of the LED light, replacement maintenance is reduced and energy costs are saved.

Advantages of the HE-T-CITY

- Direct 24V connection, integrated switching device
- Easy mounting via holder or clip
- Robust design, shock and vibration resistant
- Resistant to commercial cooling lubricants
- LED technology with up to 50,000 operating hours



Type	L ₁	L ₂	Ø
HE-T-CITY.6	202 mm	236 mm	38 mm
HE-T-CITY.12	372 mm	406 mm	38 mm
HE-T-CITY.18	542 mm	576 mm	38 mm
HE-T-CITY.24	746 mm	712 mm	38 mm

Type	Operating voltage	Number of LEDs	Input	Watt	Color temperature	Mounting
HE-T-CITY.6	24 VDC	1	0.3 A	6 W	5000 K Ra 65	Holder T.FX01
HE-T-CITY.12	24 VDC	2	0.55 A	12 W	5000 K Ra 65	Holder T.FX01
HE-T-CITY.18	24 VDC	3	0.85 A	18 W	5000 K Ra 65	Holder T.FX01
HE-T-CITY.24	24 VDC	4	1.1 A	24 W	5000 K Ra 65	Holder T.FX01

Supplied with cable lengths 1.5 m, 3 m, 5 m or 10 m. Cable end with 24 VDC connection with free stranded ends or M12 plug connector

