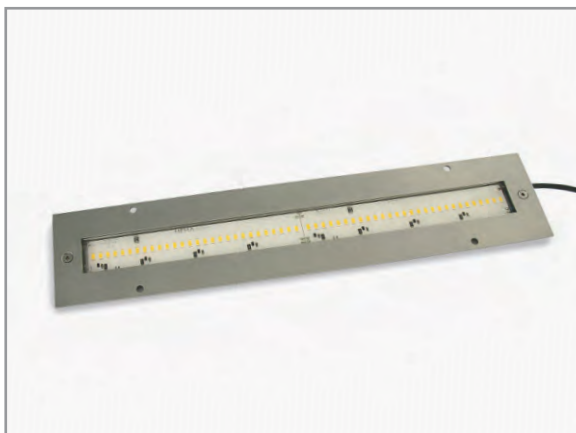


»SECRET EOS«



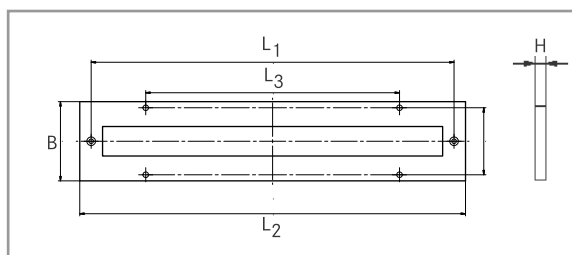
»SECRET EOS« with mounting frame

HEMA's SECRET EOS LED is 24 VDC LED light for demanding and unobtrusive applications. Thanks to the mounting frame and the small dimensions, the compact and extremely flat LED light strip can be integrated almost flush into, for example, a machine housing.

The »SECRET EOS« can be used both in the original equipment of machines as well as for the retrofit of a machine.

Advantages of the »SECRET EOS«

- Operating voltage 24 VDC
- Connection via plug system M12
- Extremely flat aluminum housing
- PUR casting
- Robust design, shock and vibration resistant
- Resistant to commercial cooling lubricants
- Ambient temperature -20°C to + 55°C
- LED technology with up to 50,000 operating hours



Dimensions HEMA »SECRET EOS«

Type	L ₁	L ₂	L ₃	B	H
SECRET EOS.6	192.2 mm	215 mm	85 mm	78 mm	7 mm
SECRET EOS.12	357.5 mm	380 mm	205 mm	78 mm	7 mm
SECRET EOS.18	522.5 mm	545 mm	415 mm	78 mm	7 mm
SECRET EOS.24	687.6 mm	710 mm	580 mm	78 mm	7 mm
SECRET EOS.36	1017.5 mm	1040 mm	1010 mm	78 mm	7 mm
SECRET EOS.48	1347.5 mm	1370 mm	1240 mm	78 mm	7 mm



Type	Operating voltage	Number of LEDs	Input	Watt	Color temperature	Mounting
SECRET EOS.6	24 VDC	1	0.21 A	5 W	5700 K	directly on the light frame
SECRET EOS.12	24 VDC	2	0.42 A	10 W	5700 K	directly on the light frame
SECRET EOS.18	24 VDC	3	0.63 A	15 W	5700 K	directly on the light frame
SECRET EOS.24	24 VDC	4	0.84 A	20 W	5700 K	directly on the light frame
SECRET EOS.36	24 VDC	6	1.26 A	30 W	5700 K	directly on the light frame
SECRET EOS.48	24 VDC	8	1.68 A	40 W	5700 K	directly on the light frame

Supplied with cable length 3 m, cable end with 24 VDC connection with free stranded ends or M12 plug connector

