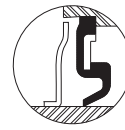


## UKF X

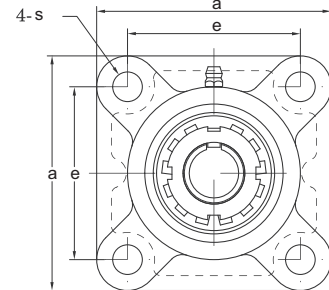
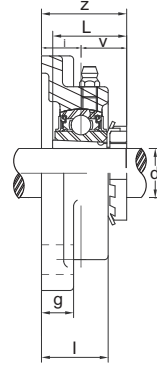
Flange Unit (square)(with adapter mounted)  
(medium-duty)



SR type seal



TRL type seal



unit No.	Shaft Dia	Dimensions (mm)									Bolt Used (mm)	Bearing No.	Housing No.	Adapter Used	Weight kg.
	d (mm)	a	e	i	g	l	s	z	L	v					
UKF X05	20	108	83	18	13	30	12	37.7	34	21	10	UK X05	F X05	HE 2305 H 2305	1.1
UKF X06	25	117	92	19	14	34	16	40.2	36	22.5	14	UK X06	F X06	HS 2306 HA 2306 H 2306 HE 2306	1.5
UKF X07	30	130	102	21	14	38	16	43.7	39	24.5	14	UK X07	F X07	HS 2307 H 2307 HA 2307	1.9
UKF X08	35	137	105	22	14	40	19	46.2	41	26	16	UK X08	F X08	HE 2308 HS 2308 H 2308	2.0
UKF X09	40	143	111	23	14	40	19	48.7	43	27.5	16	UK X09	F X09	HA 2309 HE 2309 H 2309 HS 2309	2.5
UKF X10	45	162	130	26	20	44	19	53.7	45	28.5	16	UK X10	F X10	HA 2310 HE 2310 H 2310	3.6
UKF X11	50	175	143	29	20	49	19	57.7	49	31	16	UK X11	F X11	HS 2311 HA 2311 H 2311 HE 2311	4.4
UKF X12	55	187	149	34	21	59	19	64.5	52	33	16	UK X12	F X12	HS 2312 H 2312	5.4
UKF X13	60	187	149	34	21	59	19	67.5	56	35.5	16	UK X13	F X13	HA 2313 HE 2313 H 2313 HS 2313	5.6
UKF X15	65	197	152	40	24	68	23	75.5	61	39	20	UK X15	F X15	HE 2315 H 2315 HS 2315	7.9
UKF X16	70	214	171	40	24	70	23	78.8	64	41	20	UK X16	F X16	HE 2316 H 2316	9.8
UKF X17	75	214	171	40	24	70	23	81.8	66	42	20	UK X17	F X17	HS 2317 HA 2317 H 2317 HE 2317	10.2
UKF X18	80	214	171	45	24	76	23	87.8	68	43	20	UK X18	F X18	H 2318	10.8
UKF X20	90	268	211	59	28	97	31	105.8	74	47	27	UK X20	F X20	HE 2320 H 2320	17

