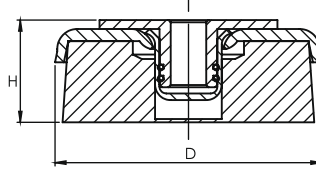


## ESM SERIES Machine Anti Vibration Mounts

| CODE    | D (mm) | H (mm) | Load kg / pcs |
|---------|--------|--------|---------------|
| ESM 80  | 80     | 40     | 500           |
| ESM 120 | 120    | 40     | 1000          |
| ESM 160 | 160    | 40     | 2000          |
| ESM 200 | 200    | 50     | 4000          |



### ADVANTAGES

- Vibration reduction
- Easy leveling for machines
- No anchor bolts to the floor, prevention of machine walking
- Easy and quick installation
- Rubber base in high resistance to oils, acids, grease, etc.

### APPLICATIONS

Milling, moulding, printing, stamping machines, wood working machines, packaging equipments, lathers, grinders, presses, die casting, band saws etc.

### Select to Mounts

Total machine weight/number of machine supports=load capacity kg/pcs.

