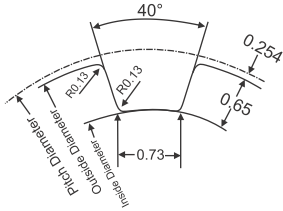
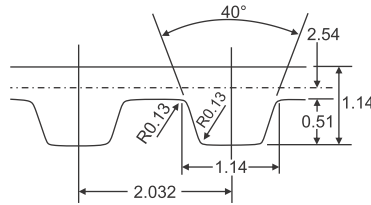


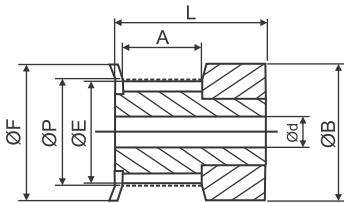
## MXL 025 Series



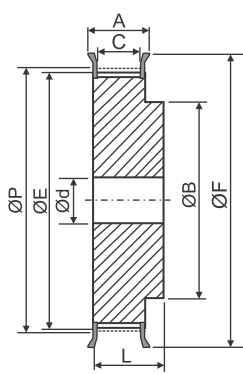
فرم دندانه



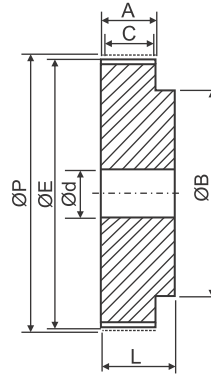
فرم تسمه



شکل 1F



شکل 6F



شکل 6

MXL با گام ۲.۰۳۲ میلیمتر برای تسمه با پهنای ۶ میلیمتر

Unit : mm

| Part No.  | Teeth No. | Fig. | ØP    | ØE    | ØF   | A   | L  | ØB | Ød | Flange       | Material  |
|-----------|-----------|------|-------|-------|------|-----|----|----|----|--------------|-----------|
| 16-MXL025 | 16        | 1F   | 10.35 | 9.84  | 15   | 8.5 | 16 | 15 | -  | With Flanges | Aluminium |
| 18-MXL025 | 18        | 1F   | 11.64 | 11.12 | 16   | 8.5 | 16 | 16 | -  |              |           |
| 20-MXL025 | 20        | 1F   | 12.94 | 12.43 | 16   | 8.5 | 16 | 16 | -  |              |           |
| 22-MXL025 | 22        | 6F   | 14.23 | 13.72 | 17.5 | 11  | 16 | 10 | -  |              |           |
| 24-MXL025 | 24        | 6F   | 15.52 | 15.01 | 20   | 11  | 16 | 10 | -  |              |           |
| 28-MXL025 | 28        | 6F   | 18.11 | 17.60 | 25   | 11  | 16 | 11 | -  |              |           |
| 30-MXL025 | 30        | 6F   | 19.40 | 18.90 | 25   | 11  | 16 | 12 | -  |              |           |
| 32-MXL025 | 32        | 6F   | 20.70 | 20.19 | 26   | 11  | 16 | 14 | -  |              |           |
| 36-MXL025 | 36        | 6F   | 23.29 | 22.78 | 28   | 11  | 16 | 16 | -  |              |           |
| 40-MXL025 | 40        | 6F   | 25.87 | 25.37 | 32   | 11  | 16 | 18 | -  |              |           |
| 42-MXL025 | 42        | 6F   | 27.17 | 26.67 | 32   | 11  | 16 | 18 | 5  |              |           |
| 44-MXL025 | 44        | 6F   | 28.46 | 27.95 | 36   | 11  | 16 | 18 | 6  |              |           |
| 48-MXL025 | 48        | 6    | 31.05 | 30.54 | -    | 11  | 16 | 20 | 7  | With Flanges | Aluminium |
| 60-MXL025 | 60        | 6    | 38.81 | 38.30 | -    | 11  | 16 | 24 | 8  |              |           |
| 72-MXL025 | 72        | 6    | 46.57 | 46.06 | -    | 11  | 16 | 25 | 6  |              |           |

فروشنده حق تغییرات مشخصات فنی و ابعاد را بدون اطلاع قبلی دارد



تلفن : (021) 33913364 - 33951660

فکس : (021) 33985603