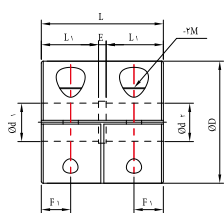


SRG SERIES

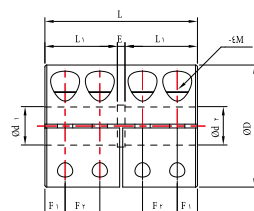
* قطعات موجود در انبار بقیه سایز ها به زودی

Rigid Coupling

Side-clamp



SRG-C



SRGL-C

Dimensions / Performance

SRG-C

Model	Size ($\pm 0.3\text{mm}$)						Screw		Rated Torque (N·m)	Max. rpm (min^{-1})	Moment of Inertia ($\text{kg}\cdot\text{m}^2$)	Mass (g)	Side-clamp Hub Split (W)
	D	L	L ₁	E	F ₁	F ₂	Size	Fastening Torque (N·m)					
* SRG-16C	16	16	7	2	3.7	-	M2.6	1	18,000	2.5×10^{-7}	6.8	○	
* SRG-20C	20	20	9	2	4.6	-	M2.6	1	2.5	7.5×10^{-7}	12	○	
* SRG-25C	25	25	11.5	2	5.8	-	M3	1.7	4	2.3×10^{-6}	24	○	
* SRG-32C	32	32	15	2	7.6	-	M4	3.5	9	8.0×10^{-6}	52	○	
* SRG-43C	43	41	19.5	2	10	-	M5	8	20	3.3×10^{-5}	114	○	
* SRG-53C	53	51	24.5	2	12.5	-	M6	13	25	9.2×10^{-5}	234	○	

- The Moment of Inertia and Mass values are based on products with max. Inner diameter.
- Max. torque/rated torque is the value regarding to a coupling's self-durability and is not related to slip-torque between the coupling bore and the shaft.

SRGL-C

Model	Size ($\pm 0.3\text{mm}$)						Screw		Rated Torque (N·m)	Max. rpm (min^{-1})	Moment of Inertia ($\text{kg}\cdot\text{m}^2$)	Mass (g)	Side-clamp Hub Split (W)
	D	L	L ₁	E	F ₁	F ₂	Size	Fastening Torque (N·m)					
* SRGL-16C	16	22.5	10.3	2	3	5.4	M2.6	1	1	16,000	3.4×10^{-7}	9.3	○
* SRGL-20C	20	24	11	2	3.1	5.6	M2.6	1	2.5	14,000	8.6×10^{-7}	14	○
* SRGL-25C	25	35	16.5	2	4.7	7.6	M3	1.7	4	10,000	3.2×10^{-6}	34	○
* SRGL-32C	32	40	19	2	5.3	9.1	M4	3.5	9	9,000	9.8×10^{-6}	63	○
* SRGL-43C	43	52	25	2	7	11.5	M5	8	20	7,000	4.1×10^{-5}	141	○
* SRGL-53C	53	66	32	2	9	14.5	M6	13	25	5,500	1.3×10^{-4}	297	○

- The Moment of Inertia and Mass values are based on products with max. Inner diameter.
- Max. torque/rated torque is the value regarding to a coupling's self-durability and is not related to slip-torque between the coupling bore and the shaft.

Standard Inner Diameter (ID)

Model	Standard Inner Diameter (d_1, d_2) (mm)														
	3	4	5	6	8	10	11	12	14	15	16	18	20	22	24
SRG□-16C	●	●	●	●											
SRG□-20C		●	●	●	●	●									
SRG□-25C			●	●	●	●	●	●							
SRG□-32C				●	●	●	●	●	●	●					
SRG□-43C						●	●	●	●	●	●	●	●	●	
SRG□-53C								●	●	●	●	●	●	●	●

- The recommended shaft tolerance is h7.
- Custom process (e.g. non-standard inner diameter, special tolerance etc.) is also available upon a special request in prior to order placement.
- Keyway is available. (Optional)



SRG SERIES

* قطعات موجود در انبار بقیه سایزها به زودی

Rigid Coupling

Slip Torque

- The below table shows the actual permissible torque values when the slip torque value is lower than the coupling's max. torque value.
- If the slip torque value is lower than the coupling's max. torque value, please check and compare between the slip torque in the below table and the operating torque value of the connected motor. It is safer to size up the coupling or use a key/keyway when the slip torque value is lower than the motor's operating torque.
- The below slip torque values may be subject to change according to different testing conditions. (e.g. shaft tolerance, Surface roughness, or acceleration/deceleration of driving shafts). On the other hand, the values could be affected when a different kind of fastening screw is used (body material or surface treatment). Therefore, we recommend you test under the same conditions before mounting.

Model	Rated Torque (N.m)	Slip Torque (N.m) by Inner Diameter (d_1, d_2)								
		3	4	5	6	8	10	11	12	14
SRG□-16C	1	1								
SRG□-20C	2.5		1.7	2	2.4					
SRG□-25C	4			2.6	3.2					
SRG□-32C	9				4.5	7				
SRG□-43C	20						8	8	8.5	14
SRG□-53C	25								20	

Various options for Side-clamp Hub Split available

<p>SRG-C 1-side hub split</p>  <p>SRG-32CW-10W-14</p> <p>ID 10mm : Hub Split (W) ID 14mm : Not Split</p>	<p>SRG-C Both-sides hub split</p>  <p>SRG-32CW-10W-14W</p> <p>ID 10mm : Hub Split (W) ID 14mm : Hub Split (W)</p>	<p>SRGL-C 1-side hub split</p>  <p>SRGL-32CW-10W-14</p> <p>ID 10mm : Hub Split (W) ID 14mm : Not Split</p>	<p>SRGL-C Both-sides hub split</p>  <p>SRGL-32CW-10W-14W</p> <p>ID 10mm : Hub Split (W) ID 14mm : Hub Split (W)</p>
			

