

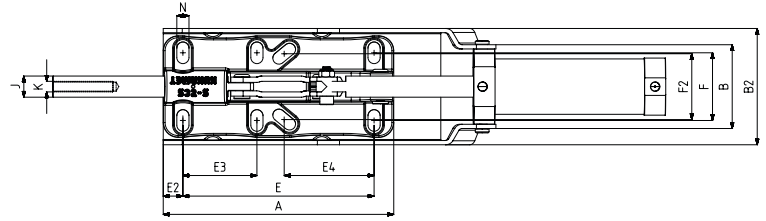
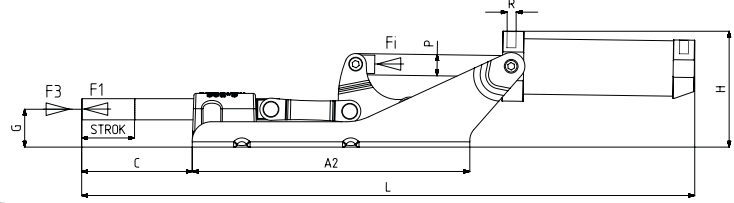
Pneumatic Push-Pull Type Toggle Clamps

672



MODEL NO	F1 (N)	F3 (N)	Fi (N)	Vn (dm ³)	STROK	(WEIGHT) (gr)	BAR
672-5 (Ø 20)	7500	18450	1100	2	95	5260	6

F1 : BASKI KUVVETİ (EXERTING FORCE) , F3 : TUTMA KAPASİTESİ (HOLDING CAPACITY) , Fi : UYGULAMA KUVVETİ (APPLIED FORCE)
Vn , 6 BAR BASINÇTA ÇİFT HAREKET İÇİN HAVA TÜKETİM MİKTARIDIR (Vn , AIR CONSUMPTION PER DOUBLE STROKE IN dm³ AT 6 BAR)



MODEL NO : 672-5

Body Mounting Base Horizontal, Casting, Tied Front

MODEL NO	A	A2	B	B2	C	D	E	E2	E3	E4	F	F2	G	H	J	K	L	M	N	P	R	PİSTON Ø
672-5 (Ø 20)	218	263	79	110	105		180,5	18,5	70	80 - 90	55-73	54-70,5	36	110	20	M12	578		11,5x20,5	Ø 20	G1/8	50



Pneumatic cylinders are double acting, magnetic and cushioning



تلفن : (021) 33913364 - 33951660

فکس : (021) 33985603