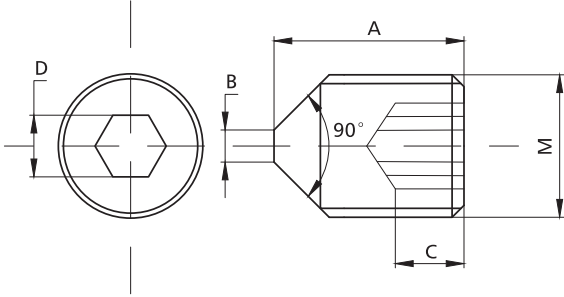


## Bolts & Screws/Hexagon Socket

**NEW**



Item No.	M	A	B	C	D	Material	Class	Finish
1038-6-1.25-14	M12*1.25	14	1.5	7	S6	Steel/SCM 435	12.9	Zinc Blue
1038-4-10	M8	10	1.5	6	S4	Steel/SCM 435	12.9	Zinc Blue
1038-3-8	M6	8	1.5	5	S3	Steel/SCM 435	12.9	Zinc Blue
1038-5-12	M10	12	1.5	6	S5	Steel/SCM 435	12.9	Zinc Blue
1038-6-1.25-16	M12*1.25	16	1.5	7	S6	Steel/SCM 435	12.9	Zinc Blue
1038-4-1-10	M8*1	10	1.5	6	S4	Steel/SCM 435	12.9	Zinc Blue
1038-3/8-12	3/8—16	12	1.5	6	S5	Steel/SCM 435	12.9	Zinc Blue
1038-2-12	M5	12	1	4	S3	Steel/SCM 435	12.9	Zinc Blue
1038-3-6	M6	6	1.5	5	S3	Steel/SCM 435	12.9	Zinc Blue

