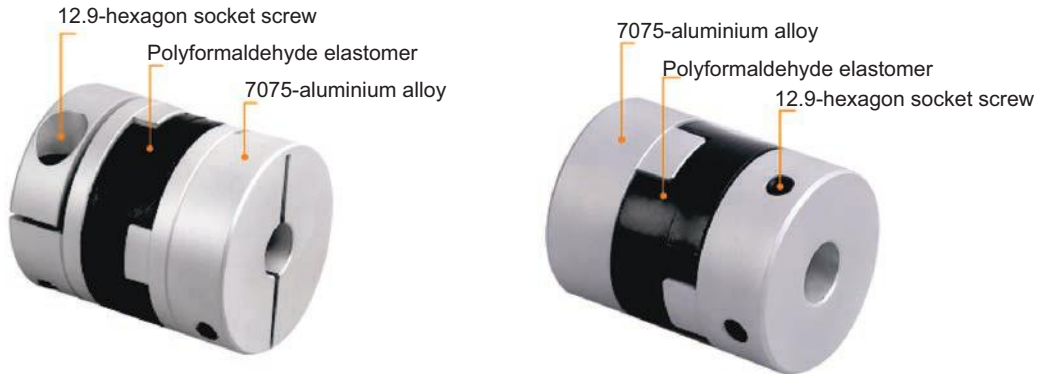
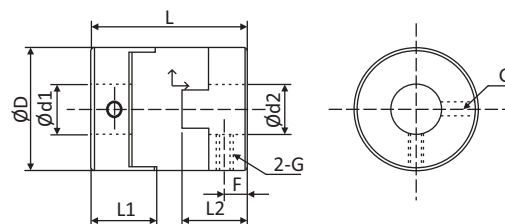
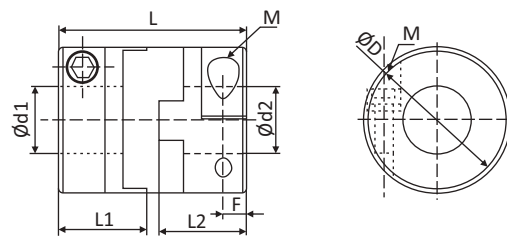


Optional stainless steel HUB



Characteristic :

- ◆ Zero rotary clearance
- ◆ High torque
- ◆ Allow large quantity of error adjustment
- ◆ Absorption of vibration
- ◆ Electrical insulation
- ◆ The advantages of simple structure, convenient installation



Dimension : (mm)

Model	aperture				D	L	L1/L2	F	G	M	tightening torque (N.M)
	d1		d2								
	Min	Max	Min	Max							
JH16	3	6.35	3	6.35	16	18	7	3.5	M3	-	0.7
JH16C	4	6	4	6		29	12.5	3.5	-	M2.5	1.5
JH20	4	8	4	8	20	23	9	4.5	M4	-	1.7
JH20C	4	8	4	8		33	14	3.5	-	M3	1.5
JH25	5	12	5	12	25	28	11	5.5	M5	-	4
JH25C	5	12	5	12		39	16.5	3.5	-	M3	1.5
JH32	5	16	5	16	32	33	13	6.5	M6	-	7
JH32C	5	16	5	16		45	19	4.5	-	M4	2.5
JH40	8	20	8	20	40	35	14	7	M6	-	7
JH40C	8	20	8	20		50	23	7	-	M5	4
JH50	12	24	12	24	50	38	17	8.5	M8	-	15
JH50C	12	24	12	24		58	27	8	-	M6	8
JH63	14	30	14	30	63	47	21	10.5	M10	-	8
JH63C	14	30	14	30		71	33	10	-	M8	16

Specification :

Model	Rated torque (N.m)	Max torque (N.m)	allowable speed (min ⁻¹)	Torsional stiffness (N.m/rad)	Moment of inertia (10 ⁻⁶ kgm ²)	lateral (mm)	angular (°)	Net weight (g)
JH16	0.7	1.4	12000	31	0.32	1.0	3.0	7
JH16C					0.58			12
JH20	1.2	2.4	10000	60	1.0	1.5	3.0	14
JH20C					1.5			19
JH25	2	4	8000	140	3.0	2.0	3.0	27
JH25C					4.4			36
JH32	4.5	9	7000	280	9.5	2.5	3.0	50
JH32C					14			69
JH40	9	18	4800	540	23	3.0	3.0	80
JH40C					41			130
JH50	18	36	3000	820	67	3.5	3.0	150
JH50C					120			230
JH63	36	72	2800	1900	220	4.0	3.0	300
JH63C					370			450

Example :

JH	65	C	10	12
Model	Outside diameter	Fixed mode	Aperture	Aperture



OBC		RW	Sungil	Rotex
كود جديد	كود قديم			
MPA & MPA-C				
MPA 26	HPS 26	-	-	-
MPA26C	HPS26C	-	-	-
MPA34C	HPS34C	-	-	-
MPA39C	HPS39C	-	-	-
MPA44C	HPS44C	-	-	-
MPA56C	HPS56C	-	-	-
MPA68C	HPS68C	-	-	-
MPA82C	HPS82C	-	-	-
MPA94C	HPS94C	-	-	-
MPA104C	HPS104C	-	-	-
MPB-C & MPC-C				
MPB34C	-	-	-	-
MPC34C	-	-	-	-
MPB44C	-	-	-	-
MPC44C	-	-	-	-
MPB56C	-	-	-	-
MPC56C	-	-	SHDS56C	-
MPB68C	-	-	-	-
MPC68C	-	-	SHDS66C	-
MPB82C	-	-	-	-
MPC82C	-	-	SHDS88C	-
DMPA-C & DMPB-C				
DMPA26C	HPL26C	-	-	-
DMPA34C	HPL34C	-	SDWB22C	-
DMPB34C	-	-	-	-
DMPA39C	HPL39C	-	-	-
DMPA44C	HPL44C	-	SDWB42C	-
DMPB44C	-	-	-	-
DMPA56C	HPL56C	-	SDWB54C	-
DMPB56C	-	-	-	-
DMPA68C	HPL68C	-	-	-
DMPB68C	-	-	-	-
DMPA82C	HPL82C	-	-	-
DMPB82C	-	-	-	-
DMPA94C	HPL94C	-	SDWB90C	-
DMPA104C	HPL104C	-	-	-
DMPC-C & DMPD-C				
DMPC34C	TM4-34C	-	-	-
DMPD34C	-	-	-	-
DMPD39C	-	-	-	-
DMPC44C	TM4-44C	-	-	-
DMPD44C	-	-	-	-
DMPC56C	TM4-56C	-	SHDW-56C	-
DMPD56C	-	-	-	-
DMPC68C	TM4-68C	-	SHDW-68C	-
DMPD68C	-	-	-	-
DMPC82C	TM4-82C	-	SHDW-82C	-
DMPD82C	-	-	-	-

OBC		RW	Sungil	Rotex
كود جديد	كود قديم			
JT & JT-C				
JT 16	PK 16	-	-	-
JT16C	PK16C	-	SBR16C	-
JT 20	PK 20	-	-	-
JT20C	PK20C	-	SBR20C	-
JT 25	PK 25	-	-	-
JT25C	PK25C	-	SBR25C	-
JT 32	PK 32	-	-	-
JT32C	PK32C	-	SBR32C	-
JT 40	PK 40	-	-	-
JT40C	PK40C	-	SBR40C	-
JT 50	PK 50	-	-	-
JT50C	PK50C	-	SBR50C	-
JT 63	PK 63	-	-	-
JT63C	PK63C	-	SBR63C	-
JR-C & JRL-C				
JR16C	JG2-16C	-	SRG-16C	-
JR20C	JG2-20C	-	SRG-20C	-
JRL20C	-	-	SRGL-20C	-
JR25C	JG2-25C	-	SRG-25C	-
JRL25C	-	-	SRGL-25C	-
JR32C	JG2-32C	-	SRG-32C	-
JRL32C	-	-	SRGL-32C	-
JR43C	JG2-43C	-	SRG-43C	-
JRL43C	-	-	SRGL-43C	-
JR53C	JG2-53C	-	SRG-53C	-
JRL53C	-	-	SRGL-53C	-
BW & BW-C & BW-T				
BW 16	JB2-16	-	-	-
BW16C	JB2-16C	-	-	-
BW 20	JB2-20	-	-	-
BW20C	JB2-20C	-	-	-
BW 25	JB2-25	-	-	-
BW25C	JB2-25C	-	-	-
BW 32	JB2-32	-	-	-
BW32C	JB2-32C	MK2/45	-	-
BW 40	JB2-40	-	-	-
BW40C	JB2-40C	MK2/100	-	-
BW 55	JB2-55	-	-	-
BW55C	JB2-55C	BKL30	-	-
BW65C	JB2-65C	BKL60	-	-
BW82C	JB2-82C	BKL80	-	-
BW40T	JB2-40T	-	-	-
BW55T	JB2-55T	-	-	-
BW65T	JB2-65T	-	-	-
BW82T	JB2-82T	-	-	-



OBC		RW	Sungil	Rotex
کد جدید	کد قدیم			
JM & JM-C				
JM 14	SRJ 14	-	-	-
JM14C	SRJ14C	-	SJC14C-RD	-
JM 16	SRJ 16	-	-	-
JM16C	SRJ16C	-	-	-
JM 20	JSRJ 20	-	-	-
JM20C	SRJ20C	-	SJC20C-RD	-
JM 25	SRJ 25	-	-	-
JM25C	SRJ25C	EKL5A	SJC25C-RD	GS9-12
JM 30	SRJ 30	-	-	-
JM30C	SRJ30C	EKL10A	SJCB30C-RD	GS 14
JM 40	SRJ 40	-	-	-
JM40C	SRJ40C	EK2/20	SJCB40C-RD	GS 19
JM 55	SRJ 55	-	-	-
JM55C	SRJ55C	EK2/60	SJC55C-RD	GS 24
JM 65	SRJ 65	-	-	-
JM65C	SRJ65C	EK2/150	SJC65C-RD	GS 28
JM 80	SRJ 80	-	-	-
JM80C	SRJ80C	EK2/300	SJC80C-RD	GS38-42
JM 95	SRJ 95	-	-	-
JM95C	SRJ95C	-	-	-
JM 105	SRJ 105	-	-	-
JM105C	SRJ105C	EK2/450	SJC100C-RD	-
JM 120	SRJ 120	-	-	GS48
JM120C	SRJ120C	-	-	-
JM 135	SRJ 135	-	-	-
JM 135C	SRJ 135C	-	-	-
JH				
JH16C	JH2-16C	-	SOH-16C	-
JH20C	JH2-20C	-	SOH-20C	-
JH25C	JH2-25C	-	SOH-25C	-
JH32C	JH2-32C	-	SOH-32C	-
JH40C	JH2-40C	-	SOH-43C	-
JH50C	JH2-50C	-	SOH-53C	-
JH63C	JH2-63C	-	SOH-70C	-
NM-Coupling				
50	NM-50	-	-	-
67	NM-67	-	-	-
82	NM-82	-	-	-
97	NM-97	-	-	-
112	NM-112	-	-	-
128	NM-128	-	-	-
148	NM-148	-	-	-
168	NM-168	-	-	-
194	NM-194	-	-	-
214	NM-214	-	-	-

OBC		RW	Sungil	Rotex
کد جدید	کد قدیم			
L-Coupling				
L035	L-SRJ035	-	-	-
L050	L-SRJ050	-	-	-
L070	L-SRJ070	-	-	-
L075	L-SRJ075	-	-	-
L090	L-SRJ090	-	-	-
L095	L-SRJ095	-	-	-
L099	L-SRJ099	-	-	-
L100	L-SRJ100	-	-	-
L110	L-SRJ110	-	-	-
L150	L-SRJ150	-	-	-
L190	L-SRJ190	-	-	-
L225	L-SRJ225	-	-	-
L276	L-SRJ276	-	-	-
XL				
XL-0	XL-SRJ0(30)	-	-	-
XL-1	XL-SRJ1(40)	-	-	-
XL-2	XL-SRJ2(55)	-	-	-
XL-3	XL-SRJ3(65)	-	-	-
XL-4	XL-SRJ4(80)	-	-	-
XL-5	XL-SRJ5(95)	-	-	-
XL-6	XL-SRJ6(105)	-	-	-
XL-7	XL-SRJ7	-	-	-
XL-8	XL-SRJ8	-	-	-
XL-9	XL-SRJ9	-	-	-
XL-10	XL-SRJ10	-	-	-
XL-11	XL-SRJ11	-	-	-
XL-12	XL-SRJ12	-	-	-
XL-13	XL-SRJ13	-	-	-
XL-14	XL-SRJ14	-	-	-
XL-15	XL-SRJ15	-	-	-
XL-16	XL-SRJ16	-	-	-

