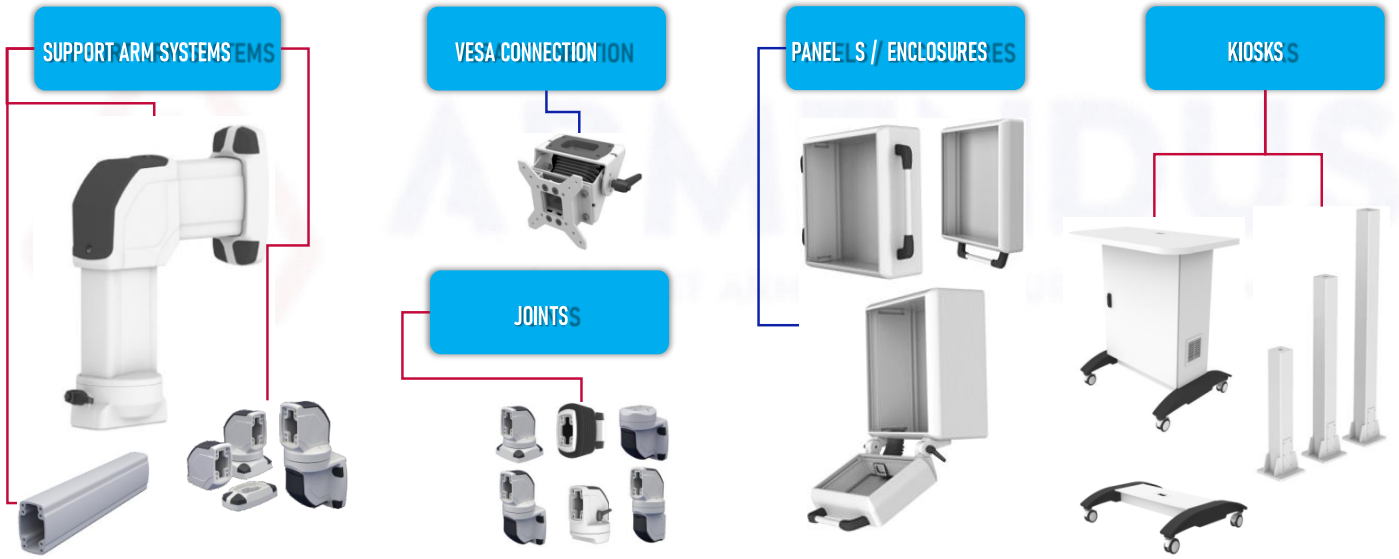


پنل و اتصالات ماشین آلات صنعتی

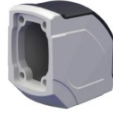




ARM.050.025
Support Arm Profile



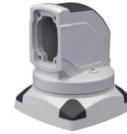
ARM.050.400
Rotatable Panel 90°
Angle Coupling



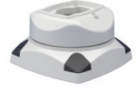
ARM.050.420
90° Angle Piece



ARM.050.500
Rotatable
Intermediate Hinge



ARM.050.600
Rotatable Top Mounted
90° Angle Joint



ARM.050.610
Rotatable Top Mounted
Vertical Outlet



ARM.050.700
Rotatable Wall-Mounted
Hinge Horizontal Outlet



ARM.050.710
Rotatable Wall-Mounted
Hinge Vertical Outlet



ARM.050.800
Wall-Socket
Mounting Bracket



ARM.050.830
Rotatable Panel
Adaptor Vertical



ARM.050.810
Warning Lamp
Cover (M22)



ARM.050.811
Warning Lamp
Cover (M18)



ARM.080.025
Support Arm Profile



ARM.080.400
Rotatable Panel 90°
Angle Coupling



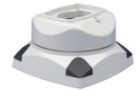
ARM.080.420
90° Angle Piece



ARM.080.500
Rotatable
Intermediate Hinge



ARM.080.600
Rotatable Top Mounted
90° Angle Joint



ARM.080.610
Rotatable Top Mounted
Vertical Outlet



ARM.080.700
Rotatable Wall-Mounted
Hinge Horizontal Outlet



ARM.080.710
Rotatable Wall-Mounted
Hinge Vertical Outlet



ARM.080.800
Wall-Socket
Mounting Bracket



ARM.080.830
Rotatable Panel
Adaptor Vertical



ARM.080.810
Warning Lamp
Cover (M22)



ARM.080.820
080/050 Support
Arm Adaptor



ARM.080.505
Steel Interconnection
Module - With Bellows



ARM.080.705
Steel Wall Mounted
Module - With Bellows



ARM.080.310
Panel Coupling



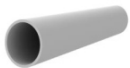
ARM.080.320
Rotatable Panel
Coupling



ARM.080.825
080/048 Adaptor



ARM.080.826
048 Adaptor



ARM.080.827
048 Pipe Profile



ARM.080.833
0130 mm Panel
Adaptor



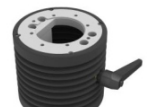
ARM.080.834
0130 mm 10°
Panel Adaptor



ARM.080.835
Panel Tilting
Adaptor



ARM.080.836
Vesa Panel Tilting
Adaptor



ARM.080.840
0130 mm Panel Tilting
Adaptor - With Bellows



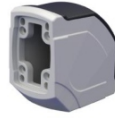
ARM.130.025

Support Arm Profile



ARM.130.400

Rotatable Panel 90°
Angle Coupling



ARM.130.420

90° Angle Piece



ARM.130.500

Rotatable
Intermediate Hinge



ARM.130.600

Rotatable Top Mounted
90° Angle Joint



ARM.130.610

Rotatable Top Mounted
Vertical Outlet



ARM.130.700

Rotatable Wall-Mounted
Hinge Horizontal Outlet



ARM.130.710

Rotatable Wall-Mounted
Hinge Vertical Outlet



ARM.130.800

Wall-Socket
Mounting Bracket



ARM.130.810

Warning Lamp
Cover (M22)



ARM.130.811

Warning Lamp
Cover (M18)



ARM.130.820

080/050 Support
Arm Adaptor



ARM.130.505

Steel Interconnection
Module - With Bellows



ARM.130.705

Steel Wall Mounted
Module - With Bellows



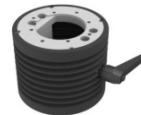
ARM.130.310

Panel Coupling



ARM.130.320

Rotatable Panel
Coupling



ARM.130.840

Ø130 mm Panel Tilting
Adaptor - With Bellows



PRO.060.00

Panel Without Handle



PRO.060.01

Panel With One Handle



PRO.060.02

Panel With Two Handles



PRO.060.01-K

Panel With Keyboard

PRO 090.00

PANEL WITHOUT HANDLE



PRO 090.01

PANEL WITH ONE HANDLE



PRO 090.02

PANEL WITH TWO HANDLES



PRO 090.01-K

PANEL WITH KEYBOARD



PRO 090.90.00

PANEL WITHOUT HANDLE + 90 MM
DEPTH



PRO 090.90.01

PANEL WITH ONE HANDLE + 90 MM
DEPTH



PRO 090.90.02

PANEL WITH TWO HANDLES + 90 MM
DEPTH



PRO 090.90.01-K

PANEL WITH KEYBOARD + 90 MM
DEPTH



تلفن : (021) 33913364 - 33951660

فکس : (021) 33985603



PRO.090.00

Panel Without Handle

PRO.090.01

Panel With One Handle

PRO.090.02

Panel With Two Handles

PRO.090.01-K

Panel With Keyboard

PRO 060.00

PANEL WITHOUT HANDLE



PRO 060.01

PANEL WITH ONE HANDLE



PRO 060.02

PANEL WITH TWO HANDLES



PRO 060.01-K

PANEL WITH KEYBOARD



PRO 060.90.00

PANEL WITHOUT HANDLE + 90 MM DEPTH



PRO 060.90.01

PANEL WITH ONE HANDLE + 90 MM DEPTH



PRO 060.90.02

PANEL WITH TWO HANDLES + 90 MM DEPTH



PRO 060.90.01-K

PRO 060 PANEL WITH KEYBOARD + 90 MM DEPTH



PRO.120.00

Panel Without Handle

PRO.120.01

Panel With One Handle

PRO.120.02

Panel With Two Handles

PRO.120.01-K

Panel With Keyboard

PRO 120.00

PANEL WITHOUT HANDLE



PRO 120.01

PANEL WITH ONE HANDLE



PRO 120.02

PANEL WITH TWO HANDLES



PRO 120.01-K

PANEL WITH KEYBOARD



PRO 120.90.00

PANEL WITHOUT HANDLE + 90 MM DEPTH



PRO 120.90.01

PANEL WITH ONE HANDLE + 90 MM DEPTH



PRO 120.90.02

PANEL WITH TWO HANDLES + 90 MM DEPTH



PRO 120.90.01-K

PRO 120 PANEL WITH KEYBOARD + 90 MM DEPTH





PRO.150.00

Panel Without Handle

PRO.150.01

Panel With One Handle

PRO.150.02

Panel With Two Handles

PRO.150.01-K

Panel With Keyboard

PRO 150.00

PANEL WITHOUT HANDLE



PRO 150.01

PANEL WITH ONE HANDLE



PRO 150.02

PANEL WITH TWO HANDLES



PRO 150.01-K

PANEL WITH KEYBOARD



PRO 150.90.00

PANEL WITHOUT HANDLE + 90 MM DEPTH



PRO 150.90.01

PANEL WITH ONE HANDLE + 90 MM DEPTH



PRO 150.90.02

PANEL WITH TWO HANDLES + 90 MM DEPTH



PRO 150.90.01-K

PRO 150 PANEL WITH KEYBOARD + 90 MM DEPTH



KSK.PC.01

Kiosk Enclosure Systems



KSK.PC.02

Kiosk Enclosure Systems



KSK.SLIM.080

Stand Systems



KSK.SLIM.130

Stand Systems



KSK.080.01

Fixed Kiosk Plate



KSK.080.02

Modular Kiosk Plate



KSK.080.03

Fixed Kiosk Plate



تلفن : (021) 33913364 - 33951660

فکس : (021) 33985603



KSK.KABIN.01

Kiosk Enclosure Systems



KSK.KABIN.02

Kiosk Enclosure Systems



IKZ.01

Warning Lamp





CERTIFICATE

ARMENDUS OPERATÖR KOL VE PANO SİSTEMLERİ SANAYİ VE TİCARET ANONİM ŞİRKETİ

DEMİRCİ MAH. DOĞAN CAD. NO:6
NİLÜFER / BURSA / TÜRKİYE

Has been assessed and found to Comply with the Requirements of:
Denetlenmiş ve aşağıdaki standart gerekliliklerine uygunluğu görülmüştür:

ISO 9001:2015

The Quality Management System is applicable to:
Kalite Yönetim Sistemi:

MANUFACTURING OF ALUMINIUM BAR, ROD, WIRE AND PROFILE, TUBE, PIPE
AND FITTINGS, PRODUCTION AND SALES OF OPERATOR ARM AND PANEL
SYSTEMS AND PANEL AIR CONDITIONING

ALUMİNYUM BAR, ÇUBUK, TEL VE PROFİL, TÜRÜ, BORU VE BAĞLANTI PARÇALARI
İMALATI, OPERATÖR KOL VE PANO SİSTEMLERİ İLE PANO KLİMA DİREKTİFİ VE SATIŞI

Certificate Number: QMS-010633 Initial Certification Date: 12.09.2022
Belge Numarası: QMS-010633 İlk Belgelendirme Tarihi: 12.09.2022
Certification Period: 3 Years Certificate Validity Date: 11.09.2023
Belgelendirme Periyodu: 3 Yıl Belge Geçerlilik Tarihi: 11.09.2023



ACCREDITED
Management System
Certification Body
MSCB-135



gurus

IQOR Sertifikasyon Oranı



IQOR ULUSLARARASI BELGELENDİRME HİZMETLERİ LTD. ŞTİ.
Beşevler Mah. Kocayulus Sk. No:3 Asilim Han Plaza K:2 Nilüfer / BURSA
Tel.: +90 224 266 00 16 Faks: +90 224 249 41 13 www.iqor.com e-posta: info@iqor.com

CERTIFICATES



QUALITY MANAGEMENT SYSTEM CERTIFICATE

IQOR INTERNATIONAL CERTIFICATION
IAS INTERNATIONAL ACCREDITATION
SERVICE



ATTESTATION OF CONFORMITY CERTIFICATE

PRUDENS CERTIFICATION TESTING AND
TRAINING SERVICES



PRUDENS



CERTIFICATION OF CONFORMITY CE ATTESTATION OF CONFORMITY CE UYGUNLUK BEYANI

The undersigned company certifies under its sole responsibility that the item/group specified below satisfies the requirements of the GENERAL PRODUCT SAFETY DIRECTIVE 2001/95/EC, 2014/53/EU LOW VOLTAGE DIRECTIVE with apply to TL, the item group identified below has been subject to internal manufacturing checks with monitoring of the final assessment by PRUDENS TEST BELGELENDİRME VE EĞİTİM HİZMETLERİ

Aşağıda tanımlanan ürün için gurudun için 2001/95/EC GENEL ÜRÜN GÜVENLİĞİ, 2014/53/AB ALÇAK GERİLİM YÖNETMELİĞİ'ni uyguladığını garanti eder ve sorumluluğunu almayı taahhüt ederiz. Aşağıda tanımlanan ürün grubunu, 5 yıldan fazla süre boyunca PRUDENS TEST BELGELENDİRME VE EĞİTİM HİZMETLERİ tarafından kontrol edilmiştir.

Certificate Number: PY-CE182

Manufacturer Name: ARMENDUS OPERATÖR KOL VE PANO SİSTEMLERİ SANAYİ VE TİCARET ANONİM ŞİRKETİ

Trade Mark: DEMİRCİ MAH. DOĞAN CAD. NO: 6 NİLÜFER / BURSA / TÜRKİYE



Description of Product(s): OPERATÖR KOL VE PANO SİSTEMLERİ

Type: ARM 600 SERIES / ARM 600 SERIES

Related Directives: GENERAL PRODUCT SAFETY DIRECTIVE 2001/95/EC - 2014/53/EU LOW VOLTAGE DIRECTIVE

Referens Standartları: GENEL ÜRÜN GÜVENLİĞİ DİREKTİFİ 2001/95/EC - 2014/53/AB ALÇAK GERİLİM YÖNETMELİĞİ

Validity: 15.09.2022 - 14.09.2023

General Manager

General Manager

PRUDENS BELGELENDİRME TEST VE EĞİTİM HİZMETLERİ
Adres: Çambelirtet Mah. 1985. Sok. No:7/46 Sairer Park Residence
Esenyurt/İSTANBUL E-Posta: info@prudenscert.com

