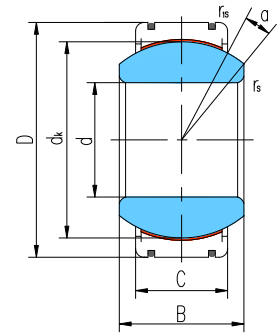


GE...ETL-2RS



GE...XTL-2RS

Sliding contact surfaces: Steel / PTFE fabric

Bearing number	Dimensions mm								Load ratings kN		Weight ≈ kg
	d	D	B	C	dk	r _s min	r _{1s} min	α° ≈	Dynamic	Static	
GE15ETL-2RS	15	26	12	9	22	0.3	0.3	8	47	79	0.026
GE17ETL-2RS	17	30	14	10	25	0.3	0.3	10	60	100	0.040
GE20ETL-2RS	20	35	16	12	29	0.3	0.3	9	83	139	0.064
GE25ETL-2RS	25	42	20	16	35.5	0.6	0.6	7	135	225	0.115
GE30ETL-2RS	30	47	22	18	40.7	0.6	0.6	6	175	290	0.149
GE35ETL-2RS	35	55	25	20	47	0.6	1	6	225	375	0.228
GE40ETL-2RS	40	62	28	22	53	0.6	1	7	275	465	0.318
GE45ETL-2RS	45	68	32	25	60	0.6	1	7	360	600	0.421
GE50ETL-2RS	50	75	35	28	66	0.6	1	6	440	735	0.562
GE55ETL-2RS	55	85	40	32	74	0.6	1	7	560	940	0.864
GE60ETL-2RS	60	90	44	36	80	1	1	6	690	1150	1.03
GE70ETL-2RS	70	105	49	40	92	1	1	6	880	1470	1.57
GE80ETL-2RS	80	120	55	45	105	1	1	6	1130	1890	2.32
GE90ETL-2RS	90	130	60	50	115	1	1	5	1380	2300	2.79
GE100ETL-2RS	100	150	70	55	130	1	1	7	1710	2860	4.44
GE110ETL-2RS	110	160	70	55	140	1	1	6	1840	3080	4.83
GE120ETL-2RS	120	180	85	70	160	1	1	6	2680	4480	8.11
GE140XTL-2RS	140	210	90	70	180	1	1	7	3020	5040	11.2
GE160XTL-2RS	160	230	105	80	200	1	1	8	3840	6400	14.1
GE180XTL-2RS	180	260	105	80	225	1.1	1.1	6	4320	7200	18.5
GE200XTL-2RS	200	290	130	100	250	1.1	1.1	7	6000	10000	28.4
GE220XTL-2RS	220	320	135	100	275	1.1	1.1	8	6600	11000	35.7
GE240XTL-2RS	240	340	140	100	300	1.1	1.1	8	7200	12000	39.7
GE260XTL-2RS	260	370	150	110	325	1.1	1.1	7	8580	14300	51.5
GE280XTL-2RS	280	400	155	120	350	1.1	1.1	6	10000	16800	64.9
GE300XTL-2RS	300	430	165	120	375	1.1	1.1	7	10800	18000	77.6

Can supply spherical plain bearing with "2GS" seals or without seal.

This series replaces the original series GE...E(X)T-2RS, capability of GE...E(X)TL-2RS see page14.

