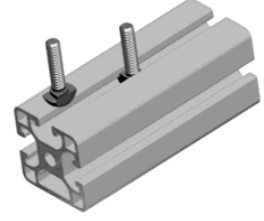
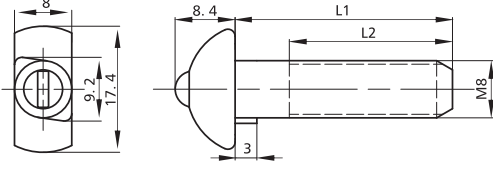





## Bolts & Screws/T Slot Bolt



Slot	Item No.	M	L1	L2	Material	PCS/CTN	KGS/CTN	CTN SIZE (mm)
	1001-1	M8	18	12.5	SS 304/1.4301	2000	21.00	225*170*180
	1001-2	M8	22	16.5	SS 304/1.4301	1600	19.00	225*170*180
	1001-3	M8	33	26.5	SS 304/1.4301	1000	15.25	225*170*180

