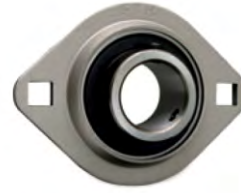


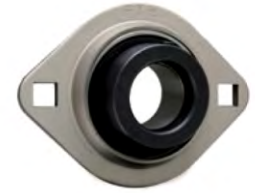
SAPFL 2

Pressed Housing Flange Units (light-duty)

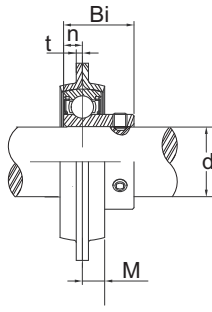
SBPFL 2



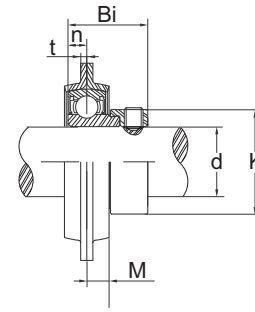
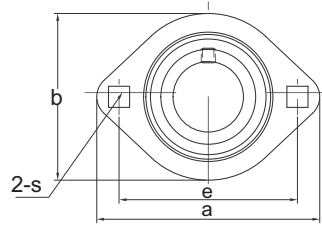
SBPFL



SAPFL



SBPFL



SAPFL

unit No.	Shaft Dia	Dimensions (mm)							Bolt Used (in.)	SAPFL				SBPFL			Housing No.
	d (mm)	a	e	M	b	t (mm)	s	n		Bi	K	Bearing No.	Weight kg.	Bi	Bearing No.	Weight kg.	
SAPFL 201 201-8	12	81	63.5	7.0	59	2.0	7.1	6.0	¼	28.5	28.6	SA201 201-8	0.22	22	SB 201 201-8	0.19	PFL 203
SAPFL 202 202-10	15	81	63.5	7.0	59	2.0	7.1	6.0	¼	28.5	28.6	SA202 202-10	0.22	22	SB 202 202-10	0.19	PFL 203
SAPFL 203	17	81	63.5	7.0	59	2.0	7.1	6.0	¼	28.5	28.6	SA203	0.22	22	SB 203	0.19	PFL 203
SAPFL 204-12 204	20	90	71.5	8	67	2.0	9.0	7.0	⅝	29.5	33.3	SA204-12 204	0.24	25	SB 204-12 204	0.24	PFL 204
SAPFL 205-14 205 205-16	25	95	76.0	9	71	2.0	9.0	7.5	⅝	30.5	38.1	SA205-14 205 205-16	0.32	27	SB 205-14 205 205-16	0.28	PFL 205
SAPFL 206-18 206 206-19 206-20	30	113	90.5	9.5	84	2.6	11	8.0	⅝	33.9	44.5	SA206-18 206 206-19 206-20	0.41	30	SB 206-18 206 206-19 206-20	0.38	PFL 206

