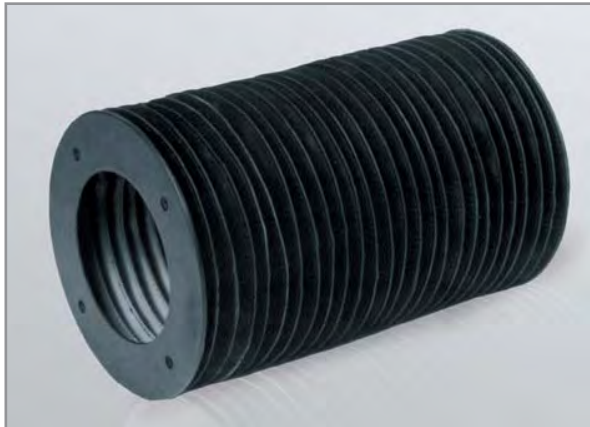


CIRCULAR-STITCHED BELLOWS

The circular-stitched bellows consist of punched disks stitched inside and outside.

Stitching achieves particularly good shape stability and high transverse stiffness.



Circular stitched bellows

Material

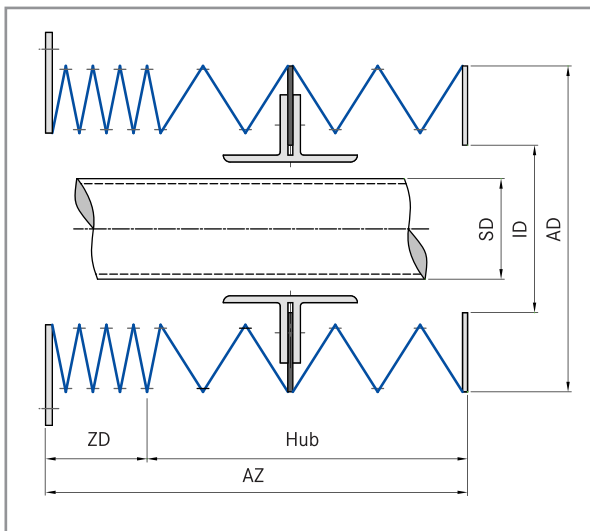
Standard applications require material GN 807, and high temperature applications aluminium/glass fibre.

Circular-stitched bellows are extremely resistant and can even withstand impact from sharp edged chips, also in the smaller versions. They are suitable only to a limited extent as protection against liquids and oils.

Mounting position

Circular-stitched bellows can be used horizontally or vertically. Additional support and guide rings made of synthetics assure a uniform distance from the spindle and so increase operating life.

When with large extensions the stability of the bellows can be increased when a wire ring is installed in every fold.



Sectional view: Circular stitched bellows

Order and request forms available at: www.hema-group.com

The usual connecting and mounting elements are metal frames, but sleeves are an alternative.

Design information

The correct bellow diameter should be about **10 mm larger** than the part they are to protect. Use the following formula for measurements.

Design and Legend

$$\text{Extension} = (\text{Stroke} / \text{FStroke}) \times \text{FAZ} + 5$$

AD	Outside diameter
FB	Fold width
ID	Inside diameter
FAZ	Fold extension
FZD	Fold compression
FStroke	Stroke per fold
SD	Diameter of spindle

HEMA Type	AD	ID	FB	FAZ	FZD	FStroke
RF 50	52	25	12.5	10	2.5	7.5
RF 72	72	33	19.5	15	2.5	12.5
RF 85	85	45	20	18	2.5	15.5
RF 95	95	53	21	18	2.5	15.5
RF 100	100	63	18.5	18	2.5	15.5
RF 120	120	82	19	18	2.5	15.5
RF 122	122	76	23	18	2.5	15.5
RF 130	130	90	20	18	2.5	15.5
RF 135	135	85	25	18	2.5	15.5
RF 140	140	100	19	18	2.5	15.5
RF 145/1	145	93	26	18	2.5	15.5
RF 145/2	145	105	20	18	2.5	15.5
RF 150	150	110	20	18	2.5	15.5
RF 160	160	112	24	18	2.5	15.5
RF 170	170	125	22.5	18	2.5	15.5
RF 180/1	180	132	24	20	2.5	17.5
RF 180/2	180	141	19.5	18	2.5	15.5
RF 190	190	150	20	20	2.5	17.5
RF 200	200	152	24	18	2.5	15.5
RF 220	220	170	25	20	2.5	17.5
RF 235	235	190	22.5	18	2.5	15.5
RF 245	245	200	22.5	20	2.5	17.5
RF 260	260	202	29	18	2.5	15.5
RF 266	266	216	25	20	2.5	17.5
RF 300	300	250	25	20	2.5	17.5
RF 365	365	320	22.5	18	2.5	15.5
RF 400	400	340	30	20	2.5	17.5

Other sizes on request

