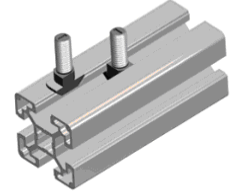
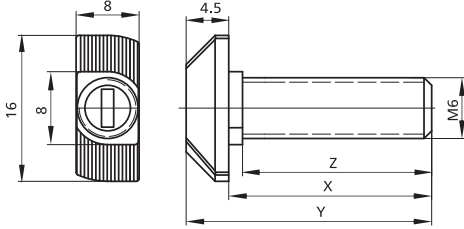


Bolts & Screws/T Slot Bolt



Slot	Item No.	M	X	Y	Z	Material	Finish	PCS/CTN	KGS/CTN	CTN SIZE (mm)
8	1003-1	M6	16	20.5	14.5	Steel/class 8.8	Zinc Blue	2500	17.45	225*170*180
8	1003-2	M6	20	24.5	18.5	Steel/class 8.8	Zinc Blue	2500	18.90	225*170*180
8	1003-3	M6	25	29.5	23.5	Steel/class 8.8	Zinc Blue	2500	16.60	225*170*180

