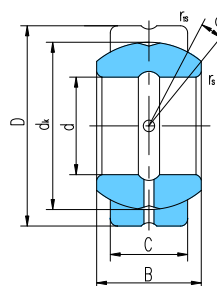
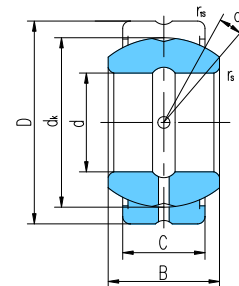


Sliding contact surfaces: Steel / Steel



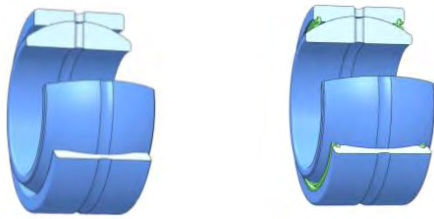
GEZ...ES



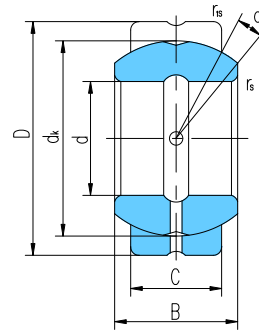
GEZ...ES-2RS

Bearing number	Dimensions								Load ratings kN		Weight ≈kg
	d	D	B	C	dk	rs min	r1s min	α° ≈	Dynamic	Static	
GEZ12ES	12.7	22.225	11.1	9.525	18	0.15	0.6	6	13	41	0.022
	0.5	0.875	0.437	0.375	0.709	0.006	0.024				
GEZ15ES	15.875	26.988	13.894	11.913	23	0.15	0.6	6	22	65	0.036
	0.625	1.0625	0.547	0.469	0.906	0.006	0.024				
GEZ19ES	19.05	31.75	16.662	14.275	27.5	0.3	0.6	6	31	95	0.053
	0.75	1.25	0.656	0.562	1.083	0.012	0.024				
GEZ22ES	22.225	36.513	19.431	16.662	32	0.3	0.6	6	42	127	0.085
	0.875	1.4375	0.765	0.656	1.26	0.012	0.024				
GEZ25ES	25.4	41.275	22.225	19.05	36.5	0.3	0.6	6	56	166	0.121
	1	1.625	0.875	0.75	1.437	0.012	0.024				
GEZ31ES	31.75	50.8	27.762	23.8	45.5	0.6	0.6	6	86	260	0.23
	1.25	2	1.093	0.937	1.791	0.024	0.024				
GEZ34ES	34.925	55.563	30.15	26.187	49	0.6	1	5	102	310	0.35
	1.375	2.1875	1.187	1.031	1.929	0.024	0.04				
GEZ38ES	38.1	61.913	33.325	28.575	54.7	0.6	1	6	125	375	0.42
	1.5	2.4375	1.312	1.125	2.154	0.024	0.04				
GEZ44ES	44.45	71.438	38.887	33.325	63.9	0.6	1	6	170	510	0.64
	1.75	2.8125	1.531	1.312	2.516	0.024	0.04				
GEZ50ES	50.8	80.963	44.45	38.1	73	0.6	1	6	224	670	0.93
	2	3.1875	1.75	1.5	2.874	0.024	0.04				
GEZ57ES	57.15	90.488	50.013	42.85	82	0.6	1	6	280	850	1.3
	2.25	3.5625	1.969	1.687	3.228	0.024	0.04				
GEZ63ES	63.5	100.013	55.55	47.625	92	1	1	6	355	1060	1.85
	2.5	3.9375	2.187	1.875	3.622	0.04	0.04				
GEZ69ES	69.85	111.125	61.112	52.375	100	1	1	6	415	1250	2.4
	2.75	4.375	2.406	2.062	3.937	0.04	0.04				
GEZ76ES	76.2	120.65	66.675	57.15	109.5	1	1	6	500	1500	3.1
	3	4.75	2.625	2.25	4.311	0.04	0.04				
GEZ82ES	82.55	130.175	72.238	61.9	119	1	1	6	585	1760	3.8
	3.25	5.125	2.844	2.437	4.685	0.04	0.04				
GEZ88ES	88.9	139.7	77.775	66.675	128	1	1	6	680	2040	4.8
	3.5	5.5	3.062	2.625	5.039	0.04	0.04				
GEZ95ES	95.25	149.225	83.337	71.425	137	1	1	6	780	2360	5.8
	3.75	5.875	3.281	2.812	5.394	0.04	0.04				
GEZ101ES	101.6	158.75	88.9	76.2	146	1	1	6	900	2650	7
	4	6.25	3.5	3	5.748	0.04	0.04				
GEZ107ES	107.95	168.275	94.463	80.95	155	1	1	6	1000	3000	8.4
	4.25	6.625	3.719	3.187	6.102	0.04	0.04				

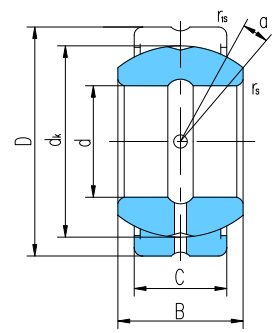




Sliding contact surfaces: Steel / Steel



GEZ...ES



GEZ...ES-2RS

Bearing number	Dimensions mm/inch								Load ratings kN		Weight ≈kg
	d	D	B	C	dk	rs min	r1s min	α° ≈	Dynamic	Static	
GEZ114ES	114.3	177.8	100.013	85.725	164.5	1	1	6	1120	3400	9.8
	4.5	7	3.937	3.375	6.476	0.04	0.04				
GEZ120ES	120.65	187.325	105.562	90.475	173.5	1	1	6	1250	3750	11.5
	4.75	7.375	4.156	3.562	6.831	0.04	0.04				
GEZ127ES	127	196.85	111.125	95.25	183	1	1	6	1400	4150	13.5
	5	7.75	4.375	3.75	7.205	0.04	0.04				
GEZ152ES	152.4	222.25	120.65	104.775	207	1	1	5	1730	5200	17.5
	6	8.75	4.75	4.125	8.15	0.04	0.04				
GEZ165ES	165.1	247.65	123.825	103.175	223	1.1	1.1	7	1830	5500	22.9
	6.5	9.75	4.875	4.062	8.78	0.043	0.043				
GEZ177ES	177.8	266.7	133.35	111.125	240	1.1	1.1	7	2120	6390	28.6
	7	10.5	5.25	4.375	9.449	0.043	0.043				
GEZ190ES	190.5	285.75	142.875	119.05	257	1.1	1.1	7	2440	7340	35.1
	7.5	11.25	5.625	4.687	10.118	0.043	0.043				
GEZ203ES	203.2	304.8	152.4	127	275	1.1	1.1	7	2770	8350	42.6
	8	12	6	5	10.827	0.043	0.043				
GEZ215ES	215.9	323.85	161.925	134.925	292	1.1	1.1	7	3130	9420	51.1
	8.5	12.75	6.375	5.312	11.496	0.043	0.043				
GEZ228ES	228.6	342.9	171.45	142.875	309	1.1	1.1	7	3510	10500	60.7
	9	13.5	6.75	5.625	12.165	0.043	0.043				
GEZ241ES	241.3	361.95	180.975	150.8	326	1.1	1.1	7	3910	11700	71.4
	9.5	14.25	7.125	5.937	12.835	0.043	0.043				
GEZ254ES	254	381	190.5	158.75	343	1.1	1.1	7	4340	13050	83.3
	10	15	7.5	6.25	13.504	0.043	0.043				
GEZ266ES	266.7	400.05	200.025	166.675	360	1.1	1.1	7	4780	14300	96.4
	10.5	15.75	7.875	6.562	14.173	0.043	0.043				
GEZ279ES	279.4	419.1	209.55	174.625	377	1.1	1.1	7	5250	15700	110.8
	11	16.5	8.25	6.875	14.843	0.043	0.043				
GEZ292ES	292.1	438.15	219.075	182.55	395	1.1	1.1	7	5740	17200	126.7
	11.5	17.25	8.625	7.187	15.551	0.043	0.043				
GEZ304ES	304.8	457.2	228.6	190.5	412	1.1	1.1	7	6250	18700	143.9
	12	18	9	7.5	16.22	0.043	0.043				

$d \leq \phi 152.4\text{mm}$, the sliding surface of inner ring can be designed crossed grooves, sketch map see page P142 figure2, suffix "/J" is added to bearing number, e.g. GEZ57ES/J

